

An aerial photograph of a construction site at dusk. The scene shows a road with traffic, green fields, and some buildings in the distance. A large, stylized yellow graphic of the letters 'PUN' is overlaid on the top half of the image. The letters are thick and have a slight shadow. The background sky is a mix of orange, pink, and blue.

PUN

HOME OF CONSTRUCTION

Company Presentation
March 2025

INHALT

- 1 PORR at a Glance
- 2 One-Stop Shop
- 3 For a better World
- 4 Our References





1 PORR at a Glance

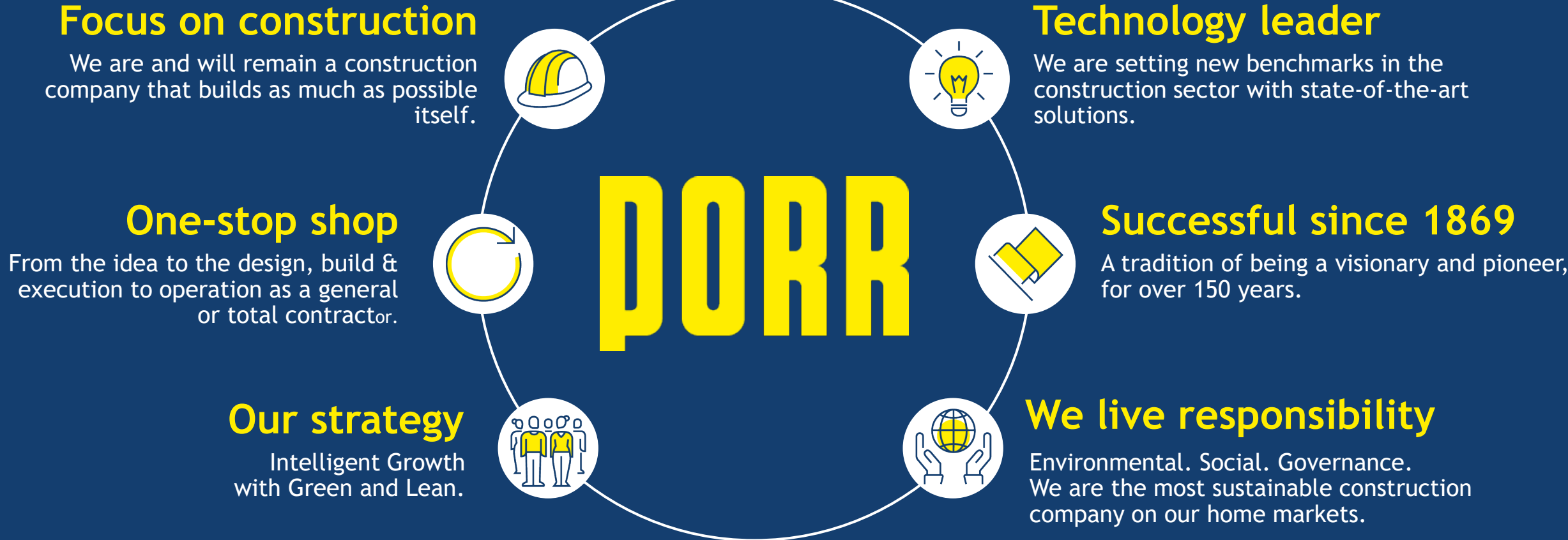
A background image of a construction site. Several tall yellow and red tower cranes are visible against a grey sky. In the center, a multi-story building is under construction, showing its concrete frame and some blue scaffolding. To the left, there's a red brick building. To the right, there are trees with some autumn-colored leaves. The overall scene is a typical urban construction environment.

OUR VISION

DORR HOME OF
CONSTRUCTION

TO BUILD A BETTER WORLD

HOME OF CONSTRUCTION



STRONG FIGURES 2024

PROFITABILITY & GROWTH



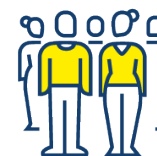
EUR > 6.7 bn
Solid output



EUR > 8.5 bn
Top order backlog



EUR 158.4m
EBIT



~ 21.000
Staff
from more than 80 countries

As of 31st December 2024



DESIGN

BUILD

CONCEPTION

RENOVATION

OUR USP
ONE-STOP
SHOP

OPERATION

PORR PORR

OUR RANGE OF SERVICES

THE RIGHT PARTNER FOR YOUR PROJECT

Building Construction



Infrastructure



Special Competencies



Civil Engineering



Environmental Engineering



Design & Engineering



CLEAR FOCUS ON EUROPE

THE SEVEN PORR HOME MARKETS

97 % Home markets

45.8%



5.8%



23.2%



1.9%



14.3%



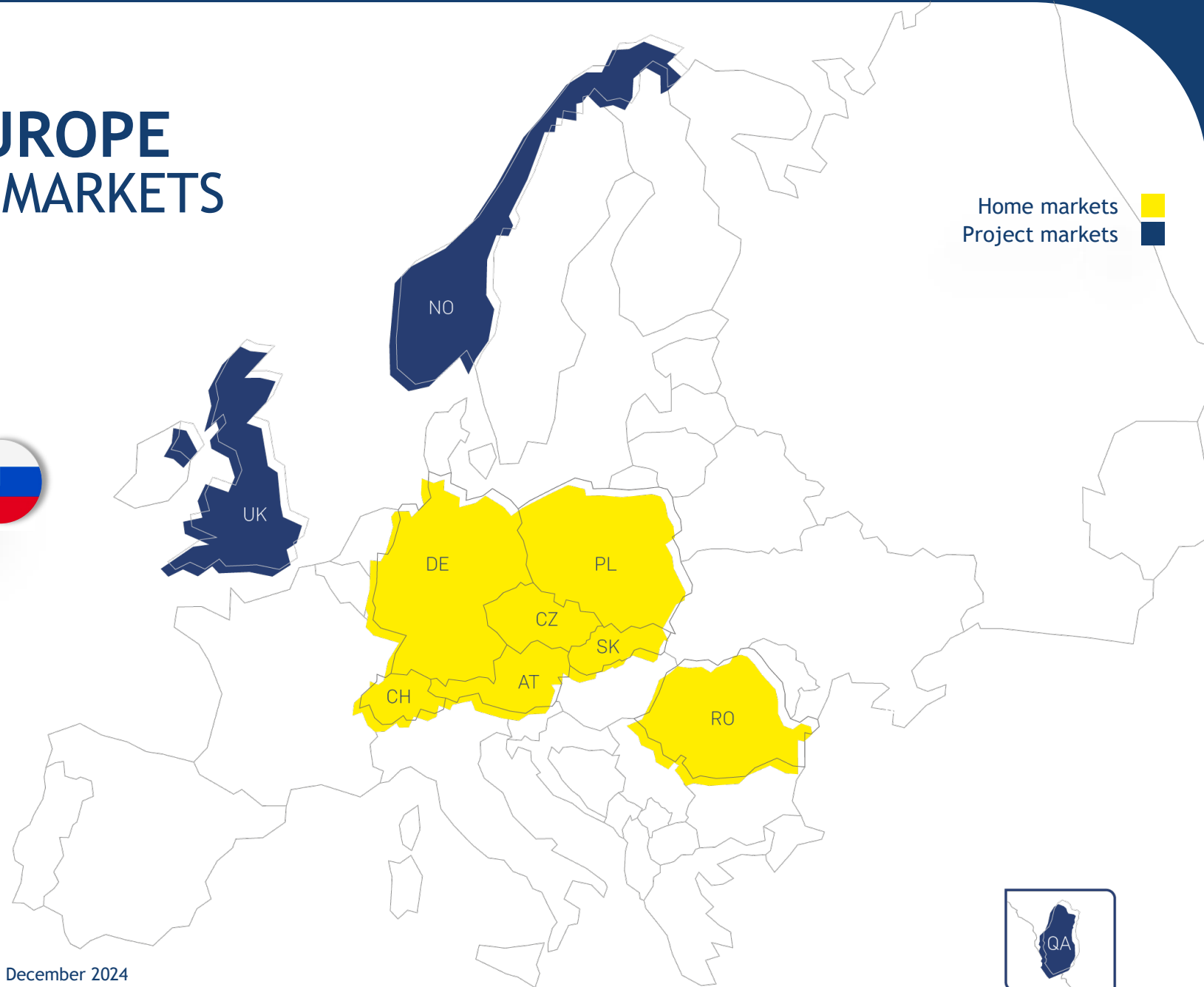
7.4%



3 %

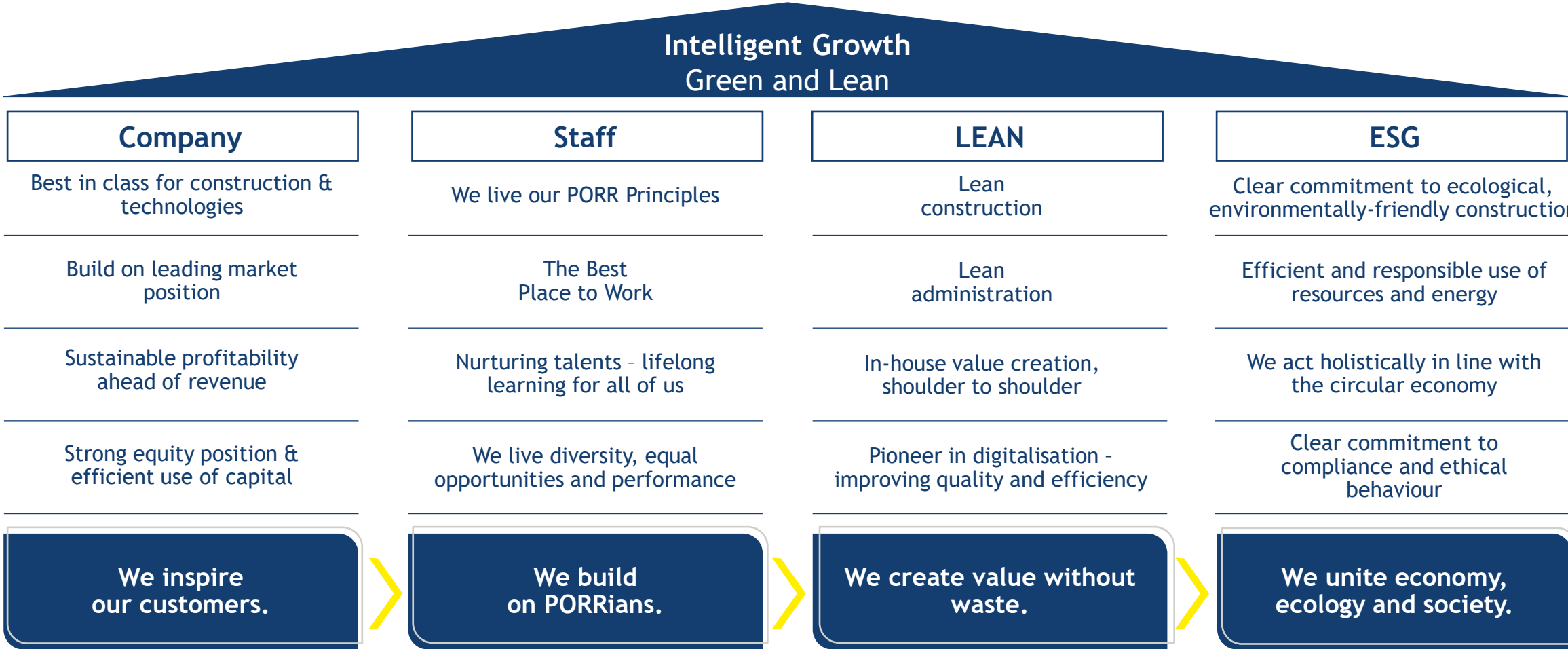
Project markets

Home markets
Project markets



The percentages correspond to the share of production output as of 31st December 2024

FOCUS ON INTELLIGENT GROWTH WITH GREEN AND LEAN





2 One-stop Shop

OUR RANGE OF SERVICES

UNIQUELY BROAD RANGE

Building Construction

Revitalisation	Healthcare facilities
Modular construction	Educational institutions
Shopping centres	Residential construction
Office buildings	Hotels
Stadium construction	

Civil Engineering & Infrastructure

Power plant constr.	Hydraulic engineering & harbours
Bridge construction	Rock technology
Road construction	Structural engineering
Railway construction	Pipeline construction
Tunnelling	
Tunnel & traffic technology	

Special Competencies

Design-build contractor/total contractor
Industrial construction/EPC
Skyscraper construction
Facade construction
Airport construction
Data centers
High-Alpine construction
Asphalt and concrete production
Mastic asphalt
Waterproofing
Steel construction
Slab Track Austria
Concrete slab construction
Facility Management
Property Management
Healthcare - Design & Build
Public Private Partnerships (PPP)

Environmental Engineering

Demolition	Asbestos and pollutant removal
Landfill operations	Recycling of C&D waste
Remediation of contaminated sites	Waste treatment
Waste management	Circular Construction
Earthworks	
Gravel production	

Design & Engineering

Architecture	Building Information
Technical building services planning	Modelling (BIM)
Structural design	General planning
Building preparation	Building certification
Construction supervision	Fire protection

SEGMENT AT / CH - AUSTRIA, SWITZERLAND

LEADING MARKET POSITION

Building Construction

KinderKunstLabor, AT



Civil Engineering

Weissensteintunnel, CH



Railway & Structural Eng.

Lake Zug, CH



Major Projects Building C.

Franklintower, CH



Industrial Construction

Operating facility Xentis, AT



Specialist Civil Eng.

Sport Arena Wien, AT



Environmental Eng.

Quarry Gradenberg, AT



SEGMENT DE - GERMANY

FOCUS ON CONSOLIDATION

Building Construction

Manfredstraße Essen



Civil Engineering

Suedlink crossing ElbX



Structural Engineering

Salzbachtal bridge



Government Services

Vogelweh Elementary School Kaiserslautern



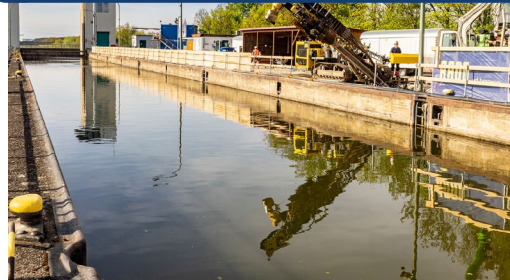
Tunnelling

Fildertunnel



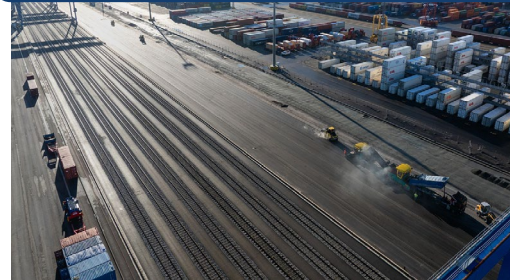
Specialist Civil Eng.

Strullendorf lock



Traffic Route Con.

Eurogate Bremerhaven



Industrial Construction

Siemens Healthineers



SEGMENT PL - POLAND

PORR'S SECOND-LARGEST SEGMENT

Building Construction

Selvita Research and Development Center



Civil Engineering

Tunnel TS 26



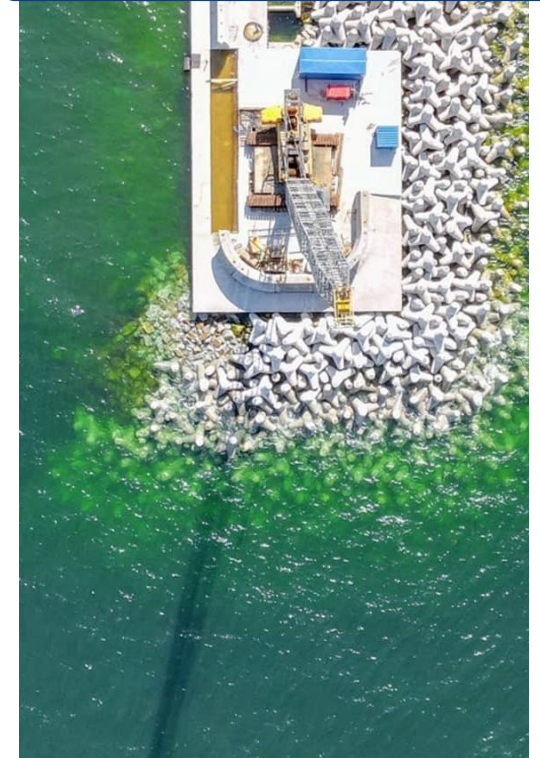
Railway Engineering

Trzcińsko Bahntunnel



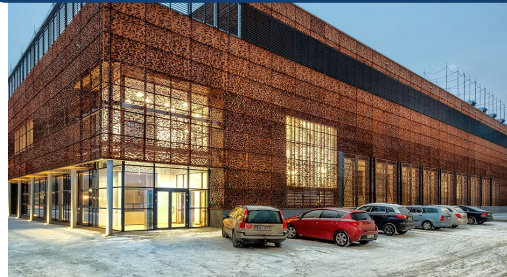
Specialist Civil Eng.

Wavebreaker Gdansk



Industrial Construction

OCEAN Data Center



Special Projects

Flood retention basin Rostoki

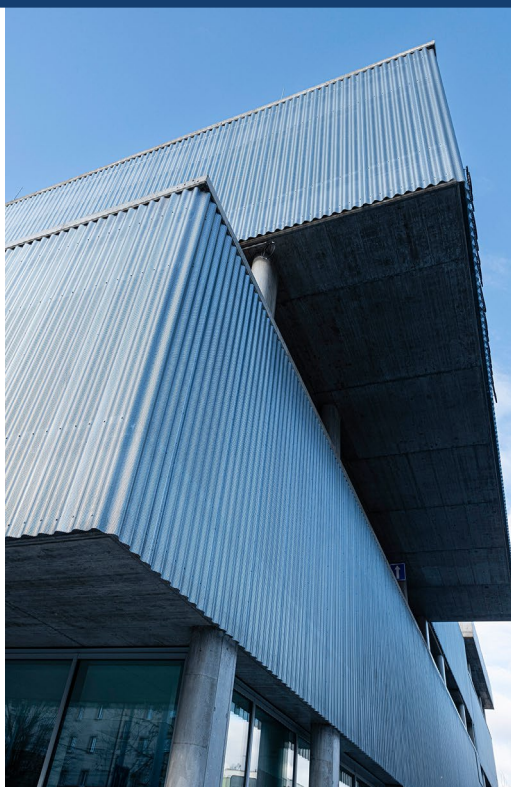


SEGMENT CEE - CZECH REPUBLIC, SLOVAKIA, ROMANIA

STRONG EXPERTISE IN MAJOR INFRASTRUCTURE PROJECTS

Building Construction

Parking lot Pardubice, CZ



Civil Engineering

Bypass Arad, RO



Specialist civil Engineering

Airport Otopeni, RO



Railway Engineering

Railway line Trencianska, SK



Special Projects

Port of Constanța, RO



SEGMENT INFRASTRUKTUR INTERNATIONAL

KONZENTRATION AUF PROJEKTGESCHÄFT

Tunnelling

Metro line U2 Vienna, AT



Infrastructure

Minnevik Bridge, NO



Slab Track

Metro Doha Greenline, QAT





DATA CENTERS TOP-LEAGUE CONSTRUCTION

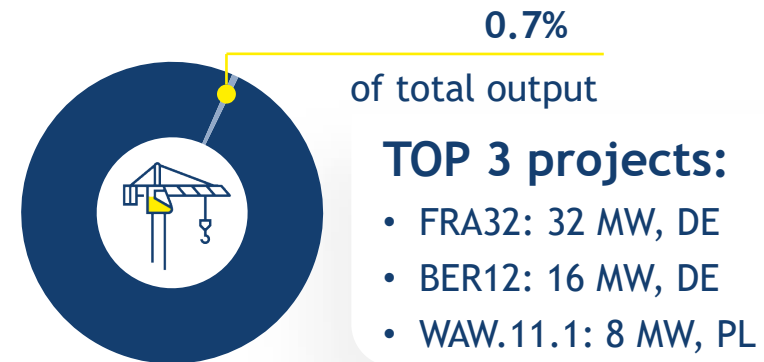
One-Stop shop - our success story

Construction of
seven data centers

Building projects of the
highest quality

Completion on time

Zero work accidents





EPC FROM PLANNING TO BUILDING

- EPC = Engineering-Procurement-Construction
- One-stop shop for major projects inland and abroad
- Preliminary simulation of construction, costs and qualities in the digital twin

Market segments

Healthcare
facilities

Industrial plants

Modular
Construction

Educational and research
buildings

Special projects (such as
airports, stadiums, wood
construction)



MODULAR CONSTRUCTION FOR AFFORDABLE HOUSING

- Use of modern, prefabricated **building services components**
- **Prefabrication** of the elements in the factory, installation takes place on site

Advantages

Shorter construction time
with high-quality
construction

Optimal utilisation
of usable space

Lower costs
per m²

CO₂ reduction
during production

An aerial photograph of a rural landscape at sunset. The sky is filled with dramatic, colorful clouds in shades of orange, yellow, and blue. Below the horizon, a winding road leads through green fields and a small cluster of buildings. A large, stylized graphic of a road with a green and white striped pattern curves across the right side of the image. In the bottom left corner, the text "3 All for a better World" is displayed in a bold, yellow font.

3 All
for a better World

THE FUTURE OF CONSTRUCTION

4 D'S

Deglobalisation

Regionalisation & resilience

PORR



Nearshoring and reshoring to build local supply chains

Industrial construction Storage buildings
R&D facilities Clean rooms Data centers
Local logistics Regional infrastructure

Decarbonisation

+ 1.5 °C max. & climate neutrality

PORR



Energy transformation and circular construction

Geothermal energy Pipeline construction
Environmental Engineering Power plants
Recycling Thermal renov. & revitalisation

Digitalisation

Artificial intelligence & digital twins

PORR



Digital transformation and operational excellence

BIM 3D - 5D Big Data Digital processes
Lean Construction Robotics AR, VR
Digital site Drones 3D printing

Demographic change

Urbanisation & aging society

PORR



Smart infrastructure, affordable housing for generations

Railway, Slab Track Tunnels, bridges
Roads Rehab clinics, medical centers
Residential Hotels, educational buildings

ESG-RATINGS

AMONG THE BEST PERFORMERS IN THE INDUSTRY



B
Climate Change & Water



C+
Prime Segment



AA
Best in industry



Gold
Top 3 % of
construction industry

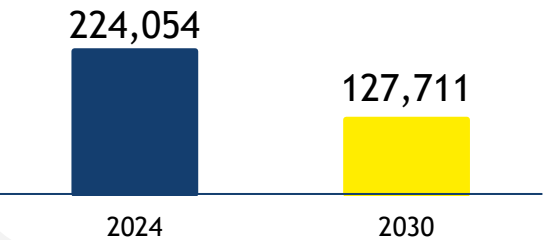


ESG IN NUMBERS

SELECTED KPIS & 2030 TARGETS

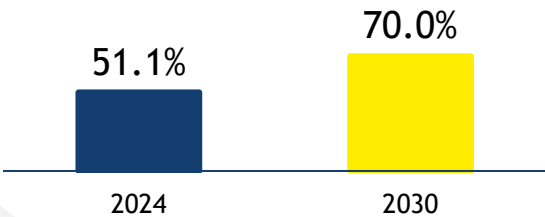
Decarbonisation

GHG Emissions Scope 1 & 2 (in t CO₂e)



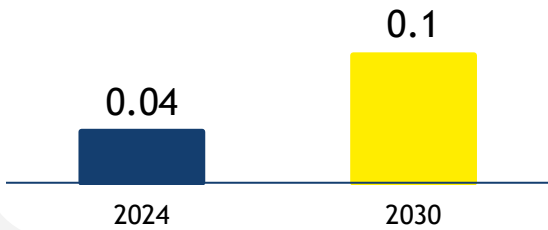
Circular economy

Internal recycling input rate (in %)



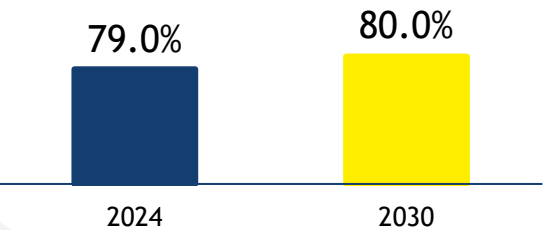
Habitats

Water intensity ratio (in m³/TEUR)



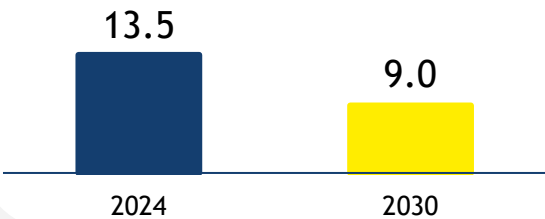
Employee satisfaction

Engagement index (in %)



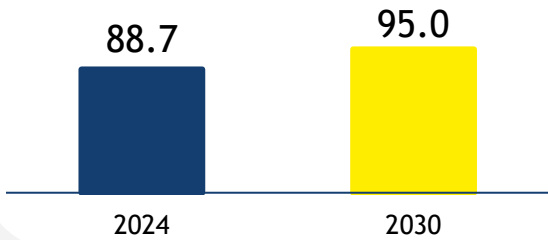
Occupational safety

Work related injuries (per 1m hrs)*



Compliance

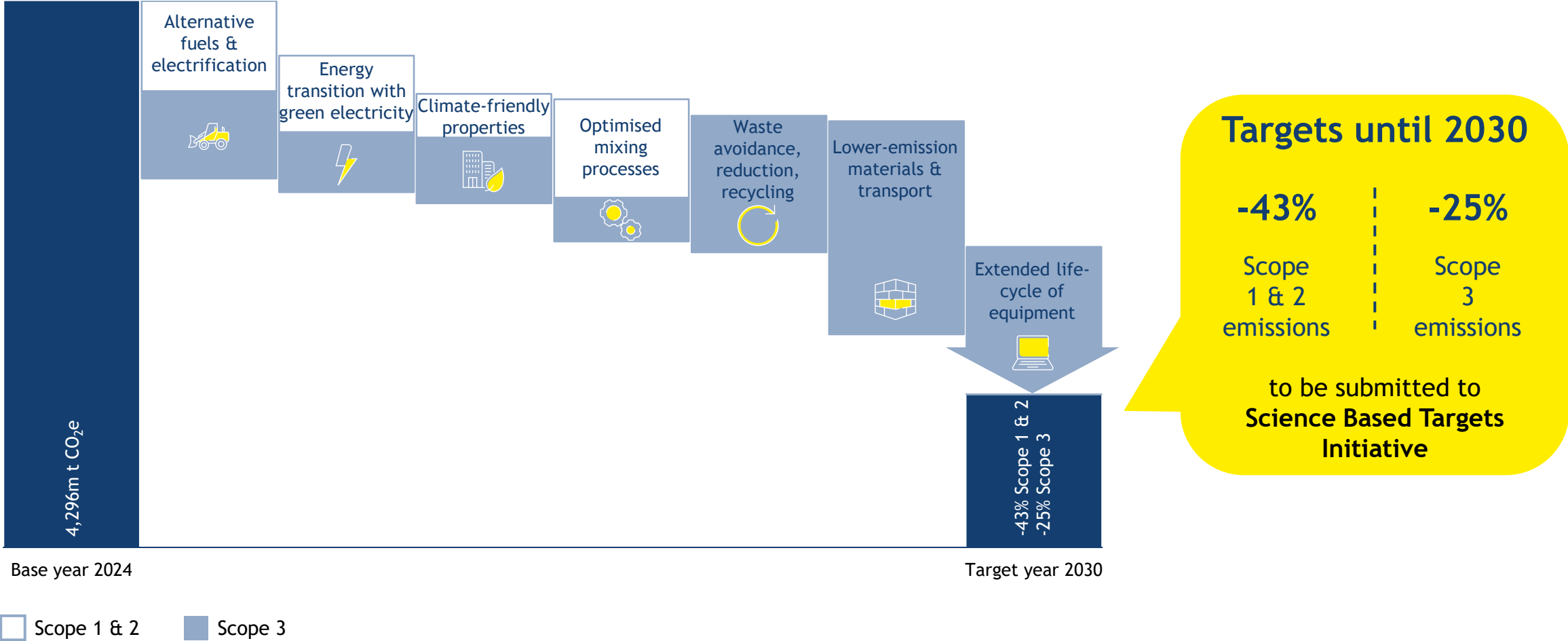
Training on anti-corruption (in %)



* Average figure, individual segments and countries perform even better (e.g. Romania)

DECARBONISATION PLAN

COMMITTED TO SCIENCE-BASED TARGETS INITIATIVE



WHAT WE BUILD ON OUR FIVE PRINCIPLES



Reliability

Commit - don't command.
Responsibility starts with me.
Rules are not a matter of
personal choice.



Pioneering Spirit

Always one step ahead.
Entrepreneurs at heart.
Mistakes are a learning opportunity.



Appreciation

Diversity - definitely.
I am not the center of the universe.
Fairness is a matter of honour for us.



Passion

Working together for the best solution.
No compromises when it comes to construction.
The best minds at PORR.



Shoulder to Shoulder

Dare to go beyond your silo.
No lone wolves, please.
Information & knowledge should be shared.

BUILD ON US - GROW WITH US

PORR AS EMPLOYER



Unique

Reliability. Shoulder to Shoulder.
Appreciation. Passion. Pioneering Spirit.
Our five principles connect us.



Leader in technology

Our pioneering spirit has allowed us to be a
technology leader in the construction
sector for more than 150 years.



Sustainable

Doing business sustainably is a core
component of our responsibility towards
society.



International

We are active across Europe and
internationally, with staff from more than
90 countries.



Nurturing

We offer a multitude of options for further
education and training so you can develop
your soft skills and grow professionally.

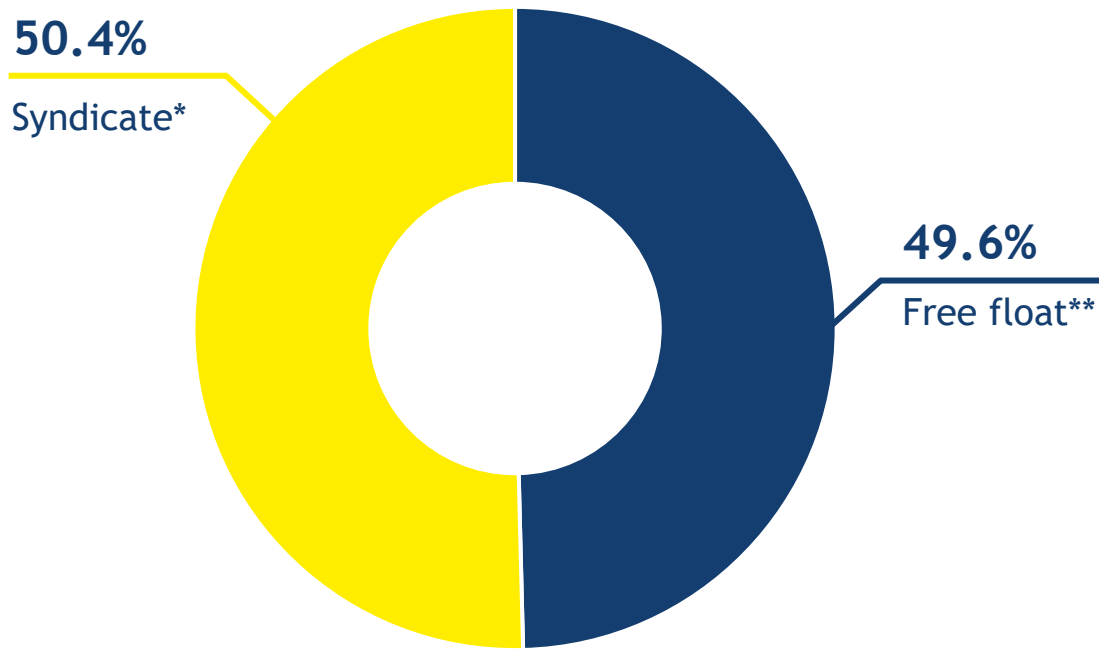


Social

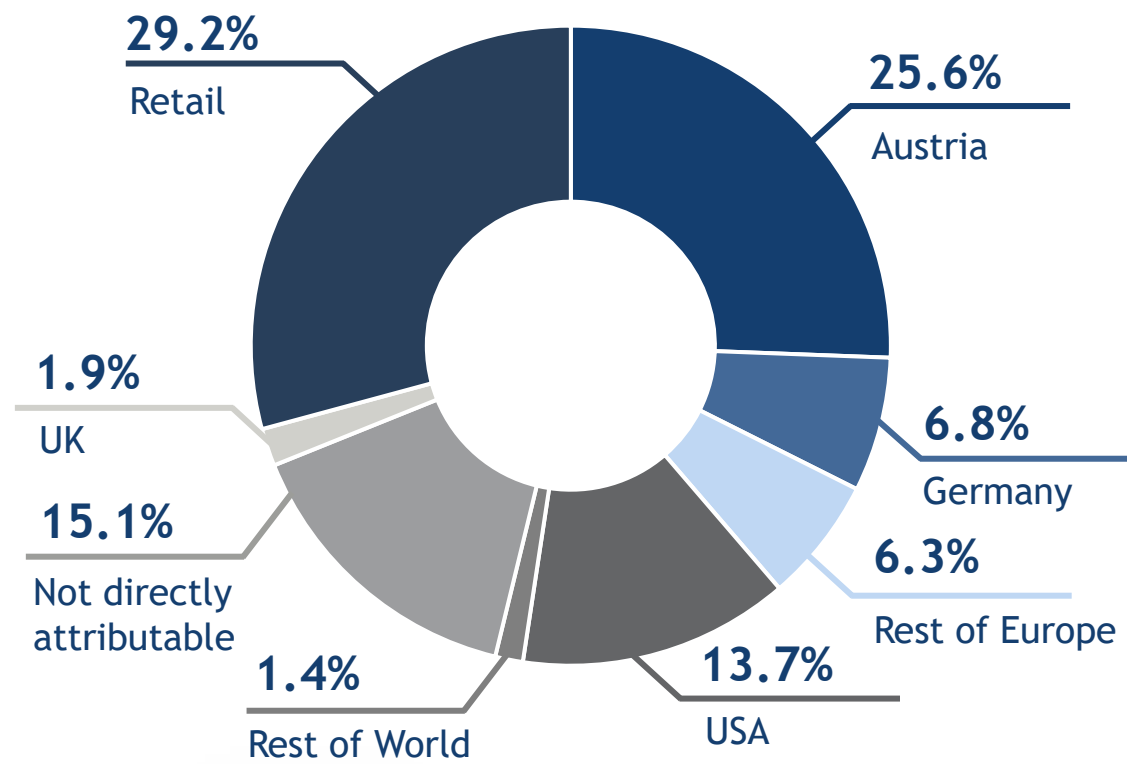
We care for you. We have inhouse
initiatives to promote diversity and equal
opportunities with We@PORR

OWNER-RUN WITH A STABLE SHAREHOLDER STRUCTURE

Shareholder structure



Free float

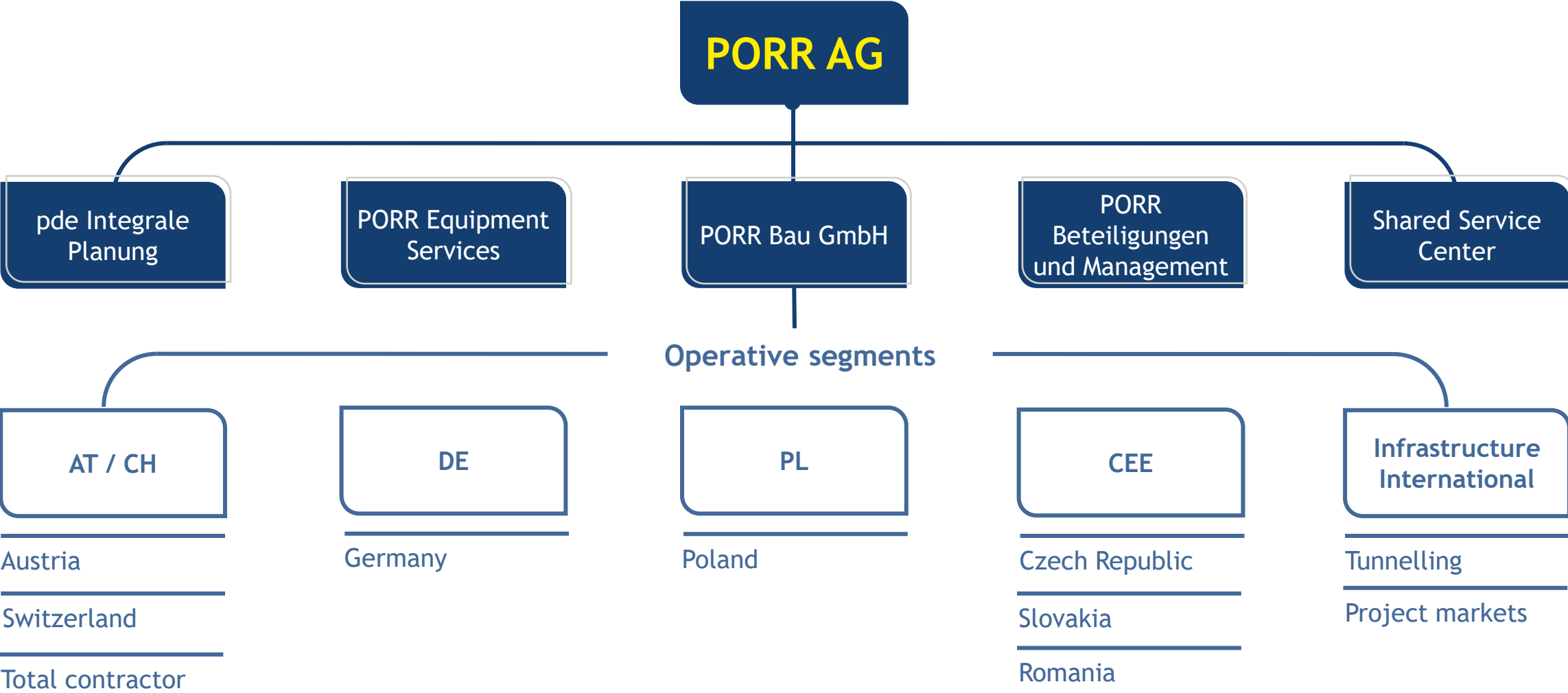


*Syndicate (Strauss Group, IGO Industries Group)

**Free float (4.3% Heitkamp Construction AG and 5.5% PORR Management as well as own shares PORR AG)

OUTLINE OF THE ORGANISATIONAL STRUCTURE

LEAN AND EFFICIENT



KEY FINANCIALS AT A GLANCE

Operating data (in EUR m)	2024	Change	2023	2022	2021
Production output ¹	6,747	2.6%	6,577	6,226	5,727
Revenue	6,190.5	2.3%	6,048.5	5,786.0	5,169.8
EBIT	158.4	12.9%	140.3	120.1	95.2
EBT	145.1	11.0%	130.7	110.0	85.4
Profit	108.9	14.6%	95.0	82.6	61.4
Earnings per share	2.32	4.8%	2.21	1.65	1.18

Financial Position indicators (in EUR m)	31.12.2024	Change	31.12.2023	31.12.2022	31.12.2021
Total assets	4,240	2.5%	4,136	4,147	4,065
Equity (incl. non-controlling interests)	894	4.0%	860	799	824
Equity ratio	21.1%	0.3 PP	20.8%	19.3%	20.3%
Net debt	2	<-100.0%	-40	-59	-65

Key data regarding shares	31.12.2024	Change	31.12.2023	31.12.2022	31.12.2021
Number of shares	39,278,250	-	39,278,250	39,278,250	39,278,250
Market capitalisation (in EUR Mio.)	696.8	39.7%	498.8	461.9	539.7

¹ The production output corresponds to the output of all companies and consortiums (fully consolidated, equity method, proportional or those of minor significance) in line with the interest held by PORR AG.



4 Our References

WE BUILD FOR EVERY ASPECT OF LIFE

BUILDING CONSTRUCTION REFERENCES

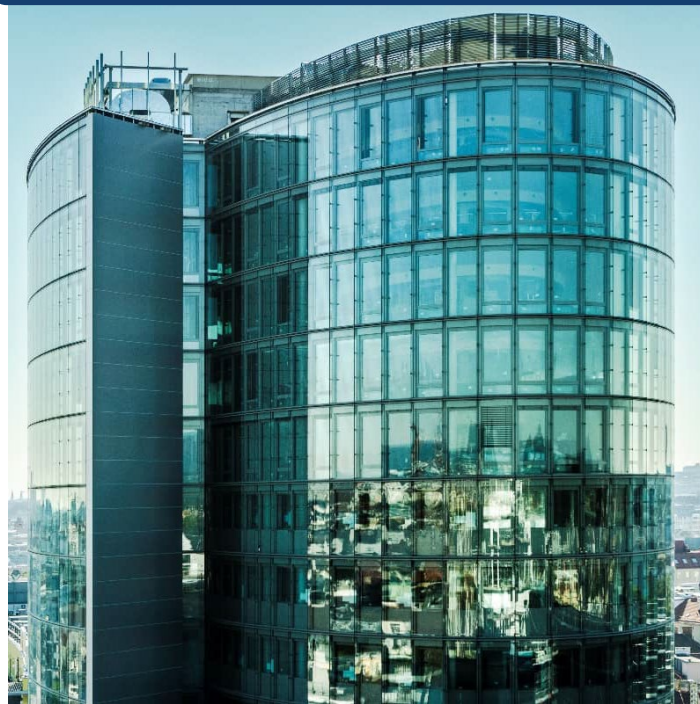
Raiffeisen Arena Linz, AT

Built 2021 - 2023



Vio Plaza Vienna, AT

Built 2020 - 2023



LVM Kristall Munster, DE

Built 2011 -2013



WE BUILD FOR EVERY ASPECT OF LIFE

BUILDING CONSTRUCTION REFERENCES

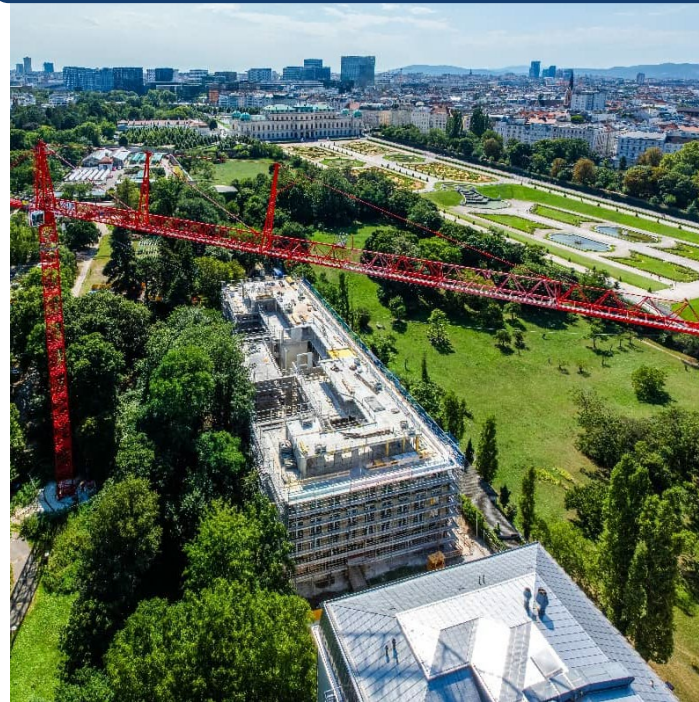
Franklintower Zurich, CH

Built 2019 - 2024



European Patent Office Vienna, AT

Built 2022 - 2024



Andersia Silver Poznan, PL

Built 2020 - 2022



WE MAKE MODERN LIVING POSSIBLE

CIVIL ENGINEERING & INFRASTRUCTURE REFERENCES

Power plant Wiesberg, AT
Built 2024 - 2025



Consortium U2/U5 Wien, AT
Built 2021 - ongoing



Railway station Pacejov, CZ
Built 2019-2022



WE MAKE MODERN LIVING POSSIBLE

CIVIL ENGINEERING & INFRASTRUCTURE REFERENCES

Highway A18, PL
Built 2020 - 2023



U5 tramline Frankfurt, DE
Built 2017 - ongoing



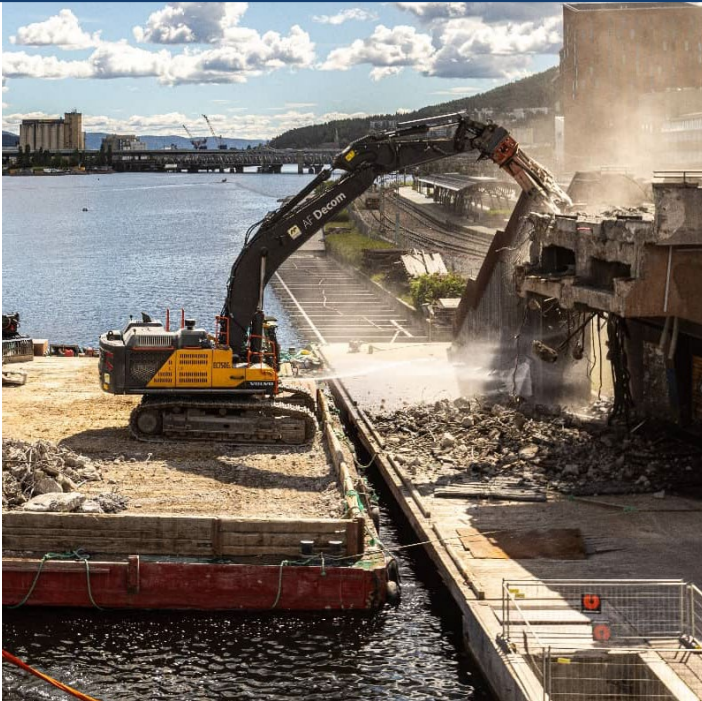
Brenner Basistunnel H53, AT
Built 2018 - ongoing



WE ARE BUILDING A GREEN FUTURE

ENVIRONMENTAL ENGINEERING REFERENCES

Demolition Drammen Bridge, NO
2022



Earthworks HWRHB Fahrafeld, AT
2020-2023



Recycling Center Himberg, AT
wholly owned PORR subsidiary since 2013



WE BUILD ON A GREEN FUTURE

ENVIRONMENTAL ENGINEERING REFERENCES

Gravel Washing Plant Himberg, AT
in operation since 2010



Landfill Linz, AT
in operation since 1990



Stone Quarry Gradenberg, AT
wholly owned PORR subsidiary since 2005



WE PLAN AT THE HIGHEST LEVEL

DESIGN & ENGINEERING REFERENCES

Wien Museum, AT
Built 2020 - 2023



Frankfurter Allee, DE
Built 2017 - 2021



Raiffeisen Corner St. Pölten, AT
Built 2020 - 2022



WE PLAN AT THE HIGHEST LEVEL

DESIGN & ENGINEERING REFERENCES

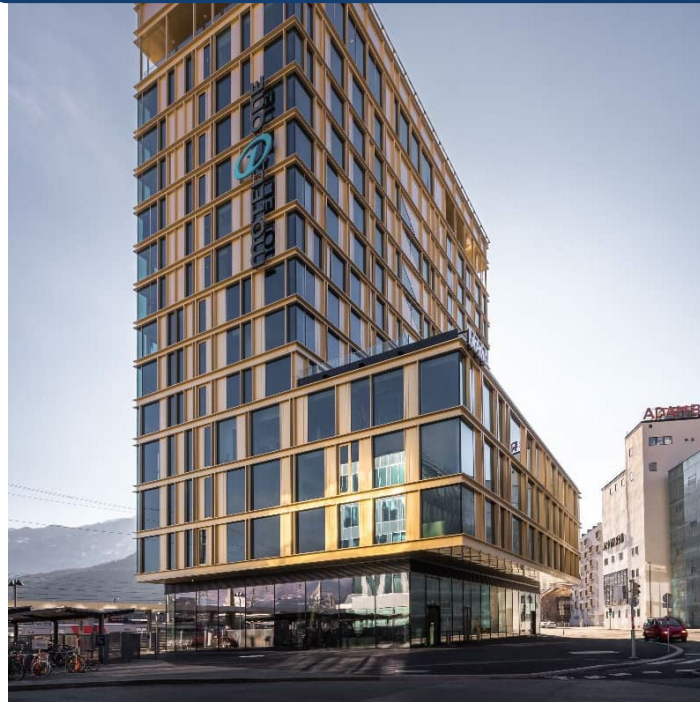
Koralmtunnel, AT

Built 2021 - ongoing



PEMA 3 Innsbruck, AT

Built 2018 - 2019



Residential complex Q6 Graz, AT

Built 2019 - 2021



CONSTRUCTION IS A
PEOPLE BUSINESS





PORR AG . Absberggasse 47 . 1100 Vienna . Austria
T +43 50 626-0 . office@porr-group.com

PORR Bau GmbH . Absberggasse 47 . 1100 Vienna . Austria
T +43 50 626-0 . office@porr.at

PORR GmbH & Co. KGaA . Walter-Gropius-Straße 23 . 80807 Munich . Germany
T +49 89 71001-0 . info@porr.de

PORR SUISSE AG . Seedorferstrasse 56 . 6460 Altdorf . Switzerland
T +41 41 875 01 01 . info@porr.ch

PORR S.A. . Ul. Hołubcowa 123 . 02-854 Warsaw . Poland
T +48 22 266 99 00 . centrala@porr.pl

PORR a.s. . Dubečská 3238/36 . 100 00 Prague 10 . Czech Republic
T +420 267 226-111 . porras@porr.cz

PORR s.r.o. . Green Point Offices . Mlynské Nivy 49 . 821 09 Bratislava . Slovakia
T +421 2 58 107 001 . office@porr.sk

PORR Construct S.R.L. . Metrooffice Building . Dimitrie Pompeiu 5-7 . 020335 Bukarest .
Sector 2 . Romania
T +40 21 312 65-00 . construct@porr.ro