



Zurich Gleisarena

Data and facts

Company	PORR Equipment Services Deutschland GmbH
---------	--

Type	Office buildings
------	------------------

Runtime	05.2017 - 03.2020
---------	-------------------

Principal	SBB AG
-----------	--------

[Project report online](#)

www.porr-group.com



Glass brick facade on platform 18.

To the PORR project video “Construction works on the Gleisarena in August 2019”

To the press release “PORR hands over the Gleisarena with its innovative glass brick facade at Zurich central station”

To the article «Eine Gleisarena mit 24'000 Glasbausteinen» in *intelligent bauen*

Impressions

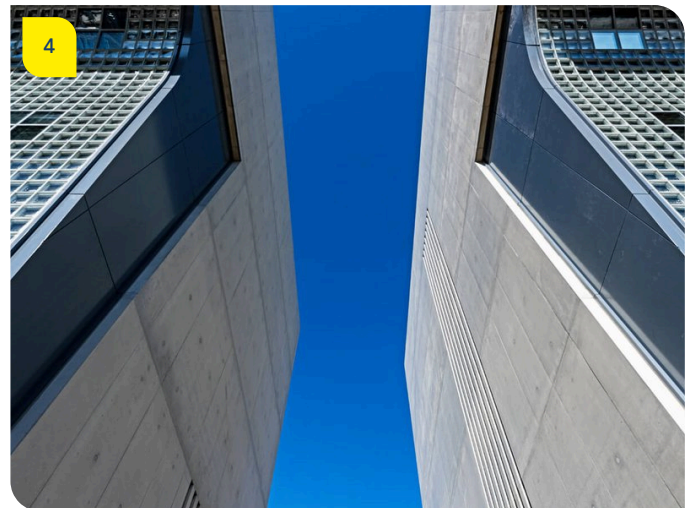
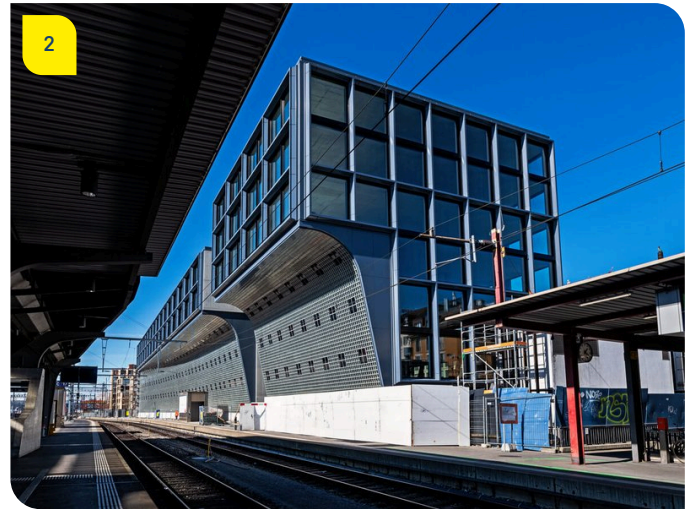


Image notes

1

New workspace above the rails.

State-of-the-art workspace with excellent transport links. Around 10,000m² of office and commercial space was created as part of this project.

2

Steel and glass cube with striking, multi-curved glass brick facade.

The Gleisarena boasts top-class architecture with an ultra-modern implementation.

3

Light and lighting effects of the glass brick facade.

The multi-curved glass brick facade guarantees naturally illuminated working space.

4

Unique glass block facade.

Impressive interaction of concrete, metal and glass.

Do you have questions about the project or would you like to learn more? Feel free to contact us for further information.

PORR AG Group Communications

Absberggasse 47

1100 Wien

T +43 50 626-0

E-Mail: comms@porr-group.com