



Wienerwald Tunnel

Data and facts

Company	PORR Tunnelbau GmbH in a consortium
Type	Tunneling, Railway construction
Runtime	08.2004 - 02.2010
Principal	ÖBB Infrastruktur Bau AG

[Project report online](#)

www.porr-group.com



22 kilometres of challenges.

Another difficulty came from the fact that the east drive had to be built from an existing railway tunnel constructed with diaphragm walls without restricting the rail service on the existing tracks.

Excavated material was transported using a rail loading system at the east portal with the help of a conveyor belt system to the Taglesberg landfill and for earthworks in Tullnerfeld. Once the works were completed, the construction site was recultivated and greenery was planted.

Last but not least, the construction site was in an inner-urban location, meaning that comprehensive measures to prevent noise and to protect the environment had to be employed.

The project can be roughly divided into four sections:

- Single-tube east drive, cyclical driving, length: 2,370m, cross section: 87 to 245m², including side wall galleries (75m), pipe shield (320m) and ventilation chamber with emergency ventilation shaft (diameter: 4.50m, depth: 200m)
- Double-tube west drive, continuous driving with two open shield tunnel boring machines (diameter 10.68m) in loose rock (Flysch, Molasse), length two times 10,750m, with two-shell lining (tubbing and inner lining relieved of pressurised water)
- Mucking gallery (sloped gallery with a gradient of 32%, length: approx. 500m) and Taglesberg landfill
- West earthworks approx. 10,400m

Impressions

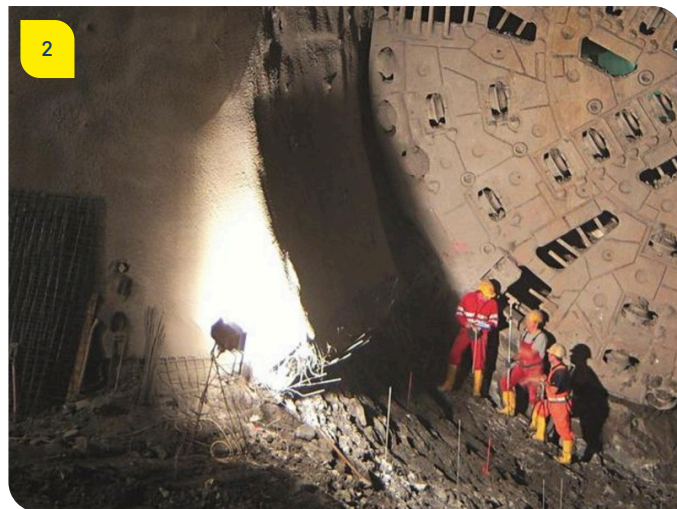


Image notes

1

Wienerwald Tunnel tracks

The new stretch under the Wienerwald is designed for speeds of up to 250km/h

2

Wienerwald Tunnel breakthrough

Construction works on Wienerwald Tunnel

3

Wienerwald Tunnel tubing storage site

Storing the tubing elements at the west portal of the tunnel

Do you have questions about the project or would you like to learn more? Feel free to contact us for further information.

PORR AG Group Communications
Absberggasse 47
1100 Wien

T +43 50 626-0

E-Mail: comms@porr-group.com