



# Sava bridge

## Data and facts

Company	PORR Bau GmbH in a consortium
Type	Bridge construction, Road construction, Large-scale projects
Runtime	10.2008 - 05.2011
Principal	City of Belgrade

[Project report online](#)

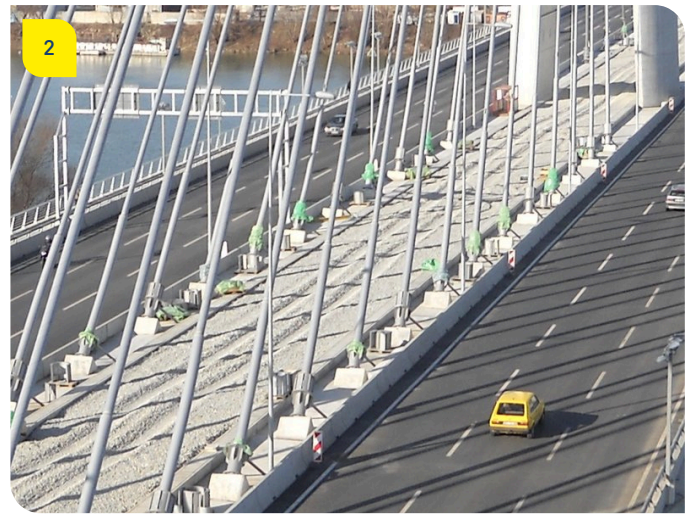
[www.porr-group.com](http://www.porr-group.com)



# A new landmark for Belgrade.

The high demands on the bridge's foundations presented a great challenge which had to be solved prior to construction start by manufacturing and stressing four test piles. As a result, the pylon rests on a combined diaphragm wall/bored pile foundation. For the construction of this foundation a dedicated work platform had to be banked up in the Sava river. All other pylons feature deep bored pile foundations, which were partially installed by means of floating units. Comprehensive sheet pile wall work as well as the creation of waterproof construction pits using jet grouting completed PORR's services. The structure's minimal settlement during and after construction attest to the quality of the installed foundations. Thanks to excellent performance, the contract was subsequently extended to the construction of the northern and southern access ramps.

## Impressions



## Image notes

1

Sava bridge.

The bridge is built across the Sava river using the balanced cantilever method.

2

Sava bridge.

The bridge was opened for traffic in late 2012.

Do you have questions about the project or would you like to learn more? Feel free to contact us for further information.

**PORR AG Group Communications**

Absberggasse 47

1100 Wien

T +43 50 626-0

E-Mail: [comms@porr-group.com](mailto:comms@porr-group.com)