

Salzburg Stadium

Data and facts

Company	PORR AG
Type	Stadium construction
Runtime	02.2006 - 04.2009
Principal	SWS Stadion Salzburg Wals-Siezenheim Planungs- und Errichtungsgesellschaft mbH

[Project report online](#)

www.porr-group.com



A stadium qualified for the Champions League.

The new upper tier was executed as a steel construction. This construction method involves V-pillars and truss beams that serve as the supporting construction for the light aluminium stands. These, in turn, were built from L-shaped longitudinal extrusion pressed profiles and intermediate cross profiles.

The new upper distribution tier housing the infrastructure for the upper tier (kiosks, sanitary facilities and steward rooms) is likewise a supporting steel construction on which a hollow-core slab was installed. The upper stands are accessed via exterior stair towers / access bridges leading to the circumferential distributor area.

To this day, the Salzburg stadium is one of the absolute top venues in Austrian football and, thanks to RB Salzburg's successes, has hosted top-class Champions League matches several times in recent years.

Impressions

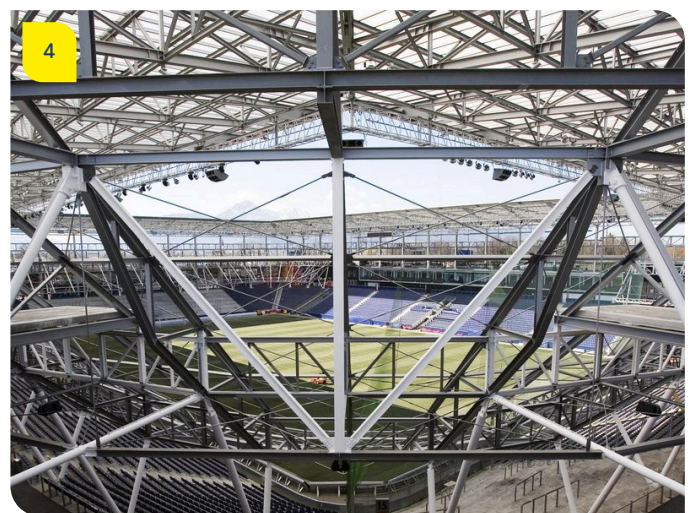
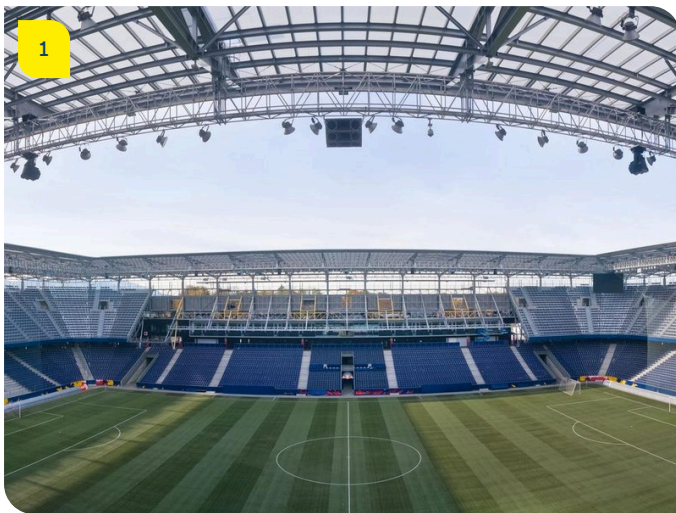


Image notes

1

Salzburg Stadium.

2

Salzburg Stadium.

Red Bull Arena Salzburg's spectacular architecture

The new upper tier provides space for 13,500 football fans.

Salzburg Stadium.

900 media seats had to be created for the EURO 2008.

Salzburg Stadium.

The new tier's steel construction

Do you have questions about the project or would you like to learn more? Feel free to contact us for further information.

PORR AG Group Communications

Absberggasse 47

1100 Wien

T +43 50 626-0

E-Mail: comms@porr-group.com