



Randselva Bridge

Data and facts

Company	PNC Norge AS
Type	Bridge construction
Runtime	02.2019 - 08.2022
Principal	Statens Vegvesen Region Øst

[Project report online](#)

www.porr-group.com



The world's longest bridge without drawings

partly as a balanced free-structure, and partly with the moveable scaffolding method (MSS). It has a continuous superstructure with a main span of 200m and six piles that vary in height between 5m and 42m. At the highest point, the bridge deck is 55m above ground level.

This Design & Build contract is based solely on BIM models; which makes it the world's longest bridge built completely without drawings, and received the TEKLA Global BIM Award.

Impressions

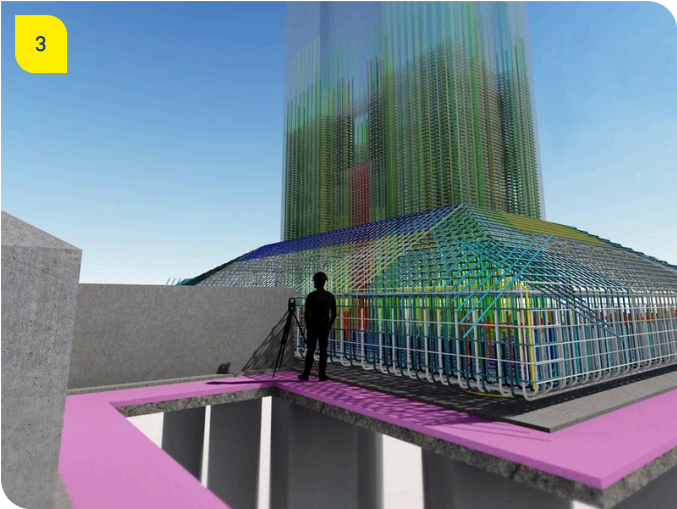
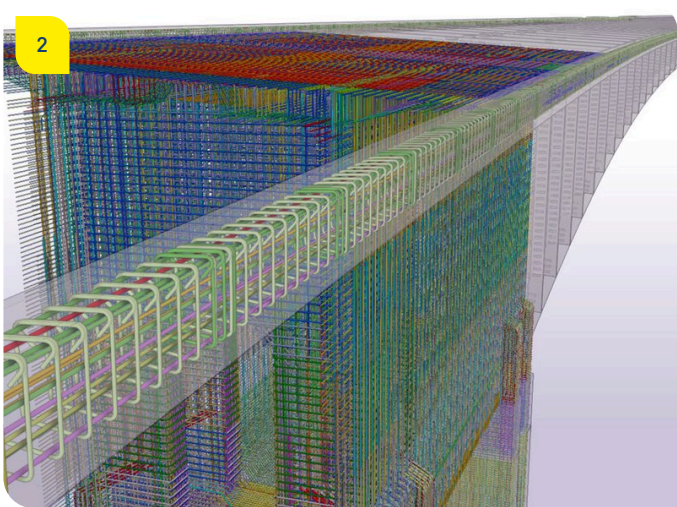




Image notes

1

Modern bridge through untouched nature.

The new Randselva bridge is crossing Randselva river and a railway track.

3

Overview of project phases.

The BIM model enables the digital visualisation of all architectural, technical, physical and functional construction data to create a digital building data model.

5

Accessible from anywhere.

All of the participants in the project can use all the information right from the start of the project.

2

Bridge construction based on BIM.

Building Information Modelling, or BIM, is an integrative, digital approach to project management in the construction sector.

4

3D-modeling from the beginning.

BIM is used in the cost estimation and construction planning phase but also offers information and benefits during construction.

6

Under construction.

Randselva bridge has a continuous superstructure with a main span of 200m. Its six piles vary in height between 5m and 42m.

7

Completed and finished.

In summer 2022, last works were done and the bridge was opened to traffic.

9

Safe journey ahead.

The new Randselva bridge will improve the accessibility and safety of traffic for all groups of road users.

8

An elegant curve to the future.

Randselva bridge is the world's longest bridge to be designed and built without a single 2D drawing.

10

A work of excellence.

Randselva Bridge is winner of the Best BIM Project & Best Infrastructure Project category of Tekla Global BIM Awards.

Do you have questions about the project or would you like to learn more? Feel free to contact us for further information.

PORR AG Group Communications

Absberggasse 47

1100 Wien

T +43 50 626-0

E-Mail: comms@porr-group.com