



# Railway Rehabilitation Campina-Predeal

Data and facts

---

**Company**

---

**Type** Railway construction

---

**Runtime** 05.2007 - 11.2011

---

**Principal** Romanian National Railway Company Compania  
Nationala de Căile Ferate Române "CFR" S.A.

---

[Project report online](#)

[www.porr-group.com](http://www.porr-group.com)

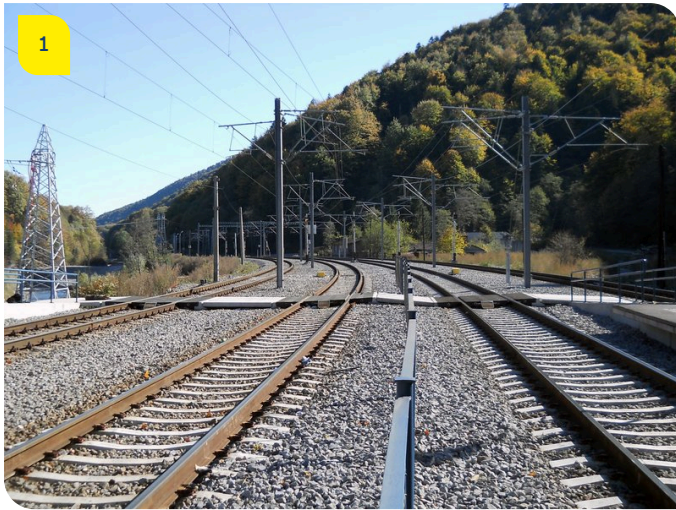




# Carpathian railway rehabilitation

Within five years, PORR mastered the execution of embankments and the railway superstructure on the aforementioned section, including the renovation and new construction of stations and stops. The execution of slope protections and drainage structures, as well as of watercourse constructions was also completed to the client's fullest satisfaction.

## Impressions



## Image notes

1

Rehabilitation on Corridor IV.

Both earthworks and track works were the centrepiece of this substantial railway infrastructure

2

Through Carpathian forests.

Over a length of 48km, the renovated railway line overcomes a height difference of more than 600m. Especially in steep terrain, slope protection was an important part of the project.

Do you have questions about the project or would you like to learn more? Feel free to contact us for further information.

**PORR AG Group Communications**

Absberggasse 47

1100 Wien

T +43 50 626-0

E-Mail: [comms@porr-group.com](mailto:comms@porr-group.com)