



Project TITLIS

Data and facts

Company	PORR SUISSE AG in consortium
Type	Structural engineering, Special civil engineering
Principal	Bergbahnen Engelberg-Trübsee-Titlis AG

[Project report online](#)

www.porr-group.com

PORR

Project TITLIS

Impressions

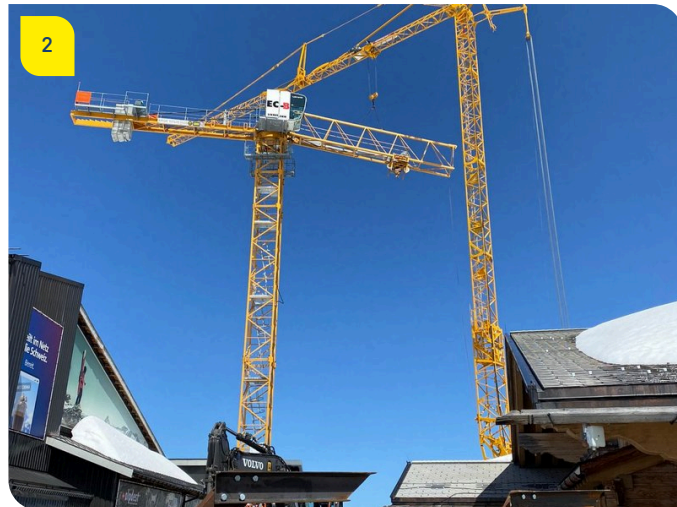


Image notes

1

Mountain Station Line II

Walls cable cellar

2

Valley Station Line II

Assembly of construction crane with Potain 85 bottom-slewing crane, Liebherr EC-B 150 top-slewing crane was assembled

3

Valley Station Line II

Falsework formwork ceiling 2nd basement

Do you have questions about the project or would you like to learn more? Feel free to contact us for further information.

PORR AG Group Communications

Absberggasse 47

1100 Wien

T +43 50 626-0

E-Mail: comms@porr-group.com