

Oerlikon integration – Subsection 4.006

Data and facts

Company	PORR SUISSE AG in consortium
Type	Railway construction
Runtime	05.2010 - 03.2016
Principal	SBB AG

[Project report online](#)

www.porr-group.com



Logistical masterpiece.

Project scope

- Site facilities
- Salvage and plant room construction
- Tunnel mouth construction
- Underpass
- New construction of Regensburg bridge
- Supporting walls on West, Middle and Hofwiesenstrasse

The section between Oerlikon and Zurich central railway station went into operation in mid-June 2014. Intercity trains from the west of Switzerland have also been using this stretch since 2015 to travel on into the east of Switzerland.

Impressions

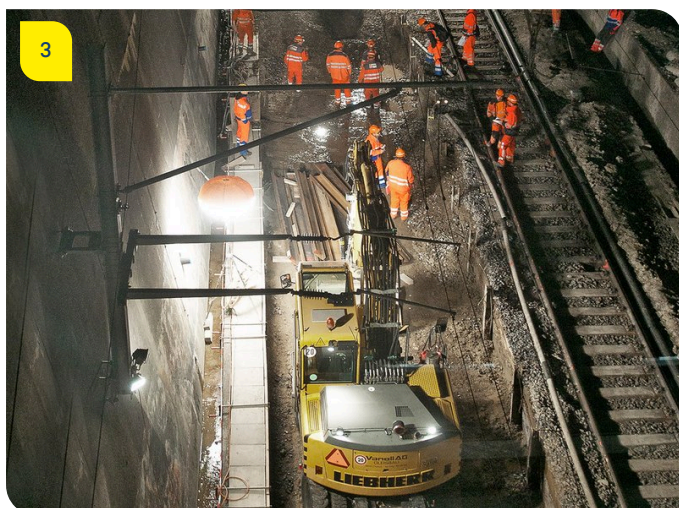
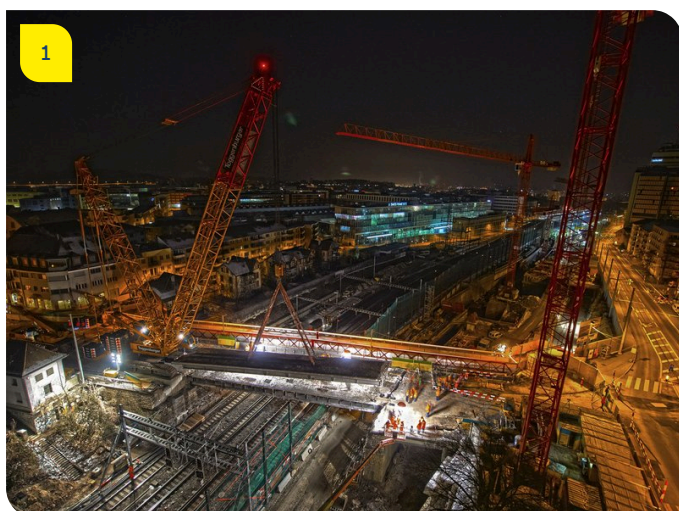


Image notes

1

The days of the old Regensburg bridge are numbered.

2

Successfully bridged.

Night works on the 100-year-old Regensburg bridge involved the use of a tracked crane to remove the old bridge in three sections and, ultimately, replace it with a new and longer structure.

3

Zurich by day and by night.

In order to complete the construction scheme as quickly as possible, the PORR team continued work at nights and on weekends.

The addition of two new platforms meant a new bridge was needed. The old bridge was too short to cross what is now an 18m array of platforms.

Do you have questions about the project or would you like to learn more? Feel free to contact us for further information.

PORR AG Group Communications

Absberggasse 47

1100 Wien

T +43 50 626-0

E-Mail: comms@porr-group.com