

OCEAN Centre of Excellence

Data and facts

Company	PORR Polska S.A.
Type	Public buildings, Data Center
Runtime	04.2015 - 11.2015
Principal	Warsaw University

[Project report online](#)

www.porr-group.com



A modern Centre of Excellence for the University of Warsaw

The highly technical inner life of the Centre of Excellence is reflected in the design of the façade, dominated as it is by tiny glass panels. Along the long side of the building it is planned to have separate so-called “technological terraces”.

- Gross floor area: 7,665 m²
- Built-up area: 3,535 m²
- Usable floor space: 6,077 m²
- Enclosed space: 31,627 m²
- Building height 14.2 m

Impressions

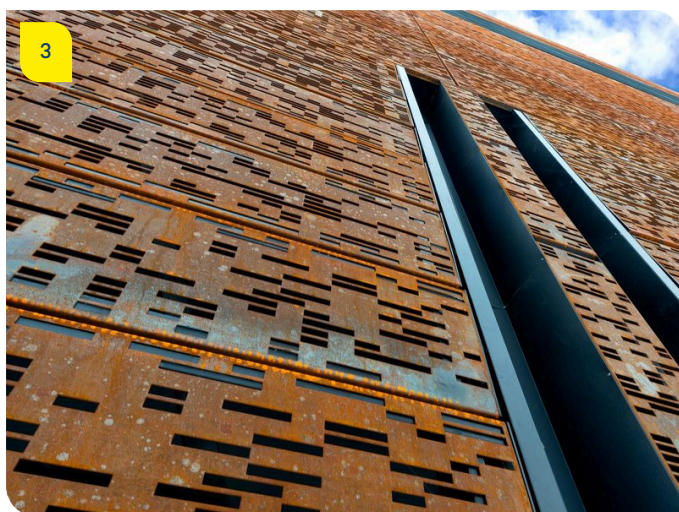
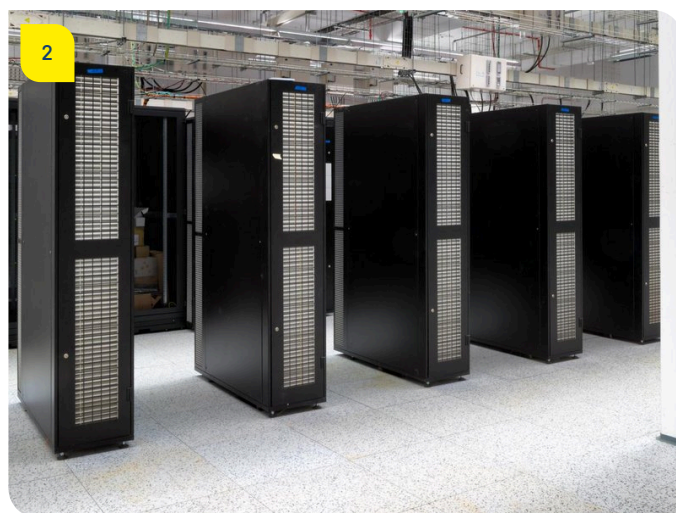
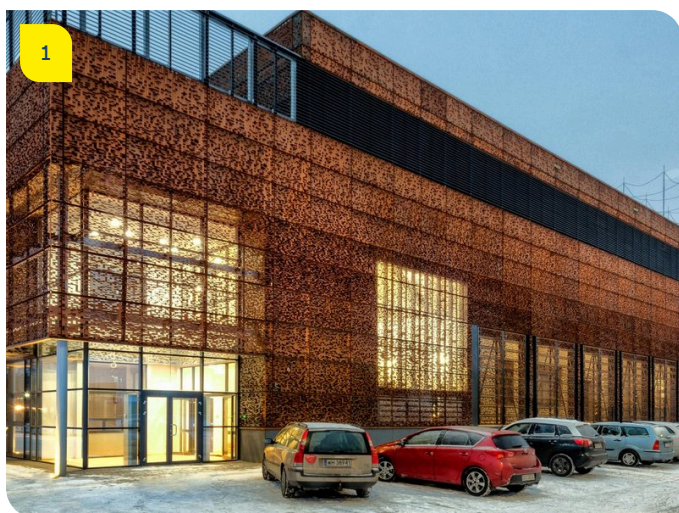


Image notes

1

OCEAN Centre of Excellence

The high-tech internal life of the new Centre of Excellence is reflected in its architecture.

2

OCEAN Centre of Excellence

Server room at the OCEAN Centre of Excellence at the University of Warsaw

OCEAN Centre of Excellence

The design of the façade at the Centre of Excellence recalls circuit diagrams.

Do you have questions about the project or would you like to learn more? Feel free to contact us for further information.

PORR AG Group Communications

Absberggasse 47

1100 Wien

T +43 50 626-0

E-Mail: comms@porr-group.com