

New construction of Danube bridge Linz

Data and facts

Company

Type

Bridge construction

Runtime

06.2018 - 12.2021

Principal

City of Linz & Linz Linien GmbH

[Project report online](#)

www.porr-group.com



Water & Steel: New connection for Linz

Eye-catcher: the steel composite structure. Designed by the French architecture firm Marc Mimram Architecte, the bridge is not only a work of art, but also has a lot to offer technically. Various complex challenges had to be overcome during construction, such as the foundations of the bridge in the Danube. The two river structures were also welded together on site piece by piece in a modular system. At around 8,400t, the impressive steel structure accounts for almost half of the bridge's total weight. This means it weighs even more than the steel of the Eiffel Tower in Paris.

Impressions

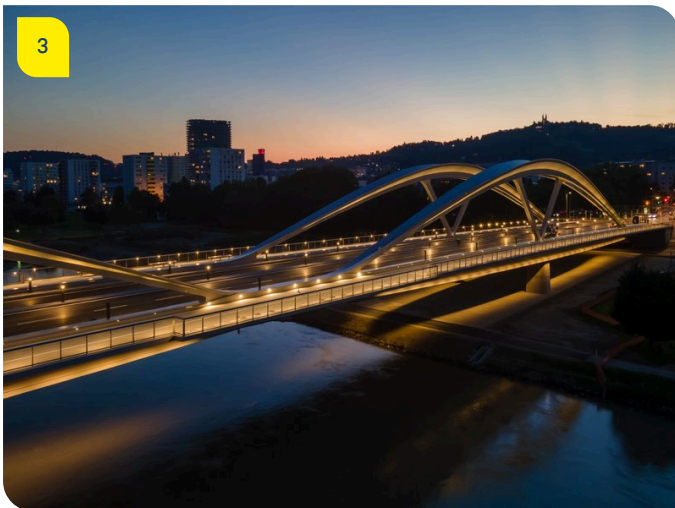
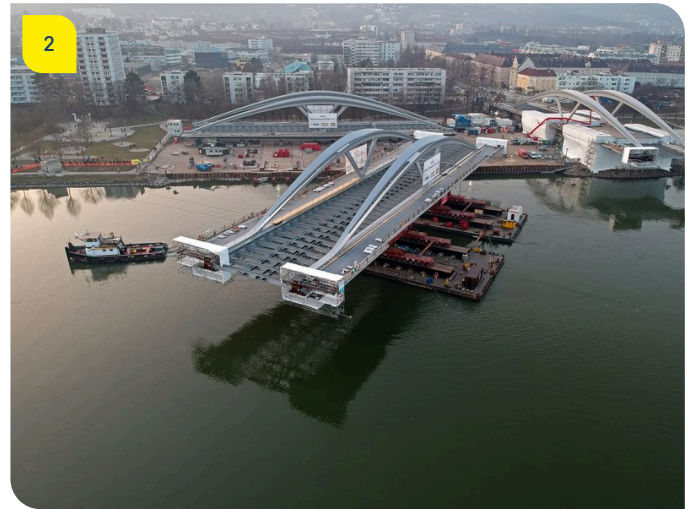


Image notes

1

Preparations are underway.

The pre-assembly site is located directly next to the bridge construction site.

2

When the bridge floats in.

Using special equipment, one of the bridge sections is floated into position.

3

A brilliant performance and a masterpiece at the same time.

The imposing steel structure of the completed bridge is impressively staged in the dark.

Do you have questions about the project or would you like to learn more? Feel free to contact us for further information.

PORR AG Group Communications

Absberggasse 47

1100 Wien

T +43 50 626-0

E-Mail: comms@porr-group.com