

Monte Laa – building sites 3 and 5

Data and facts

Company	PORR Bau GmbH, PORR Design & Engineering
Type	Special civil engineering, Technical building services planning, Building Information Modeling (BIM), Tender management, Building preparation, Structural design, General planning
Runtime	01.2015 - 12.2017
Principal	Monte Laa building site 3, Monte Laa building site 5

[Project report online](#)

A construction site presenting special challenges

Technical building equipment

- Preliminary draft
- Draft
- Submission

The building site's soil conditions required to execute the project on a pile and raft foundation and use the cut-and-cover construction method. The integration of central safety installations for all building parts was executed particularly well. Thus, power supply, sprinkler central and emergency power supply are optimally used by the entire building complex.

Impressions

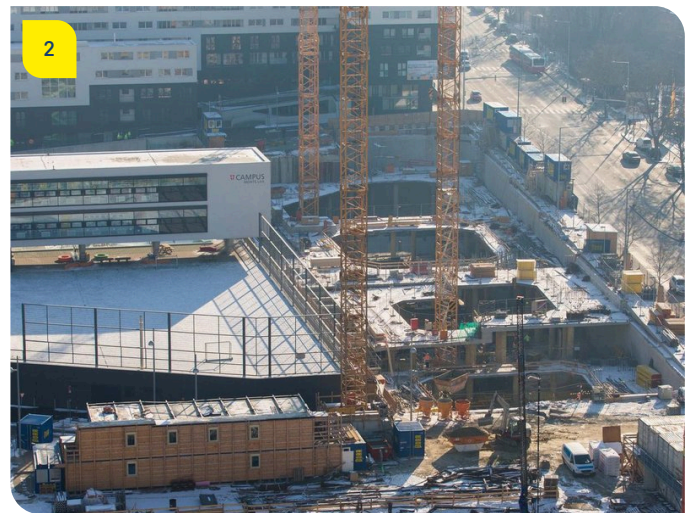


Image notes

1

Monte Laa visualisation

Until the end of 2017, an office tower and two residential towers up to 100m high will be erected in one of Vienna's most important urban development areas.

2

Monte Laa construction site

The construction area's subsoil and special ground water conditions required complex design solutions.

Do you have questions about the project or would you like to learn more? Feel free to contact us for further information.

PORR AG Group Communications

Absberggasse 47

1100 Wien

T +43 50 626-0

E-Mail: comms@porr-group.com