



Mobiliy hub Augsburg main station – eastern building area

Data and facts

| | |
|-----------|-----------------------------------|
| Company | PORR GmbH & Co. KGaA |
| Type | Tunneling |
| Runtime | 08.2012 - 04.2015 |
| Principal | Stadtwerke Augsburg Verkehrs GmbH |

[Project report online](#)

www.porr-group.com



Improves public transport in Augsburg

In the eastern construction area of the Augsburg mobility hub, PORR provided the following services, among others:

- Tramway tunnel in cut-and-cover construction over a length of 80m
- Cut-and-cover tramway tunnel over a length of 30m
- Portal structure for tramway tunnel
- Ramp construction for tramway tunnel over a length of 120m
- New installation of combined sewers
- Extensive relocation of ducts in the central station area with a length of 10.000 m
- New track construction for the Rheda City tram system, mass-spring system in some areas, approx. 500m
- New surface construction and dismantling measures

Technical data

- Tunnel cross-section: Rectangle 9 m x 5 m
- Excavation pit depth: approx. 15 m
- Concrete: 5.000 m³
- Reinforcing steel: 600 t
- Bored piles: 200 t DN600 and DN900
- Temporary pit system: 7,000 m²
- Earthworks: 30,000 m³

Impressions

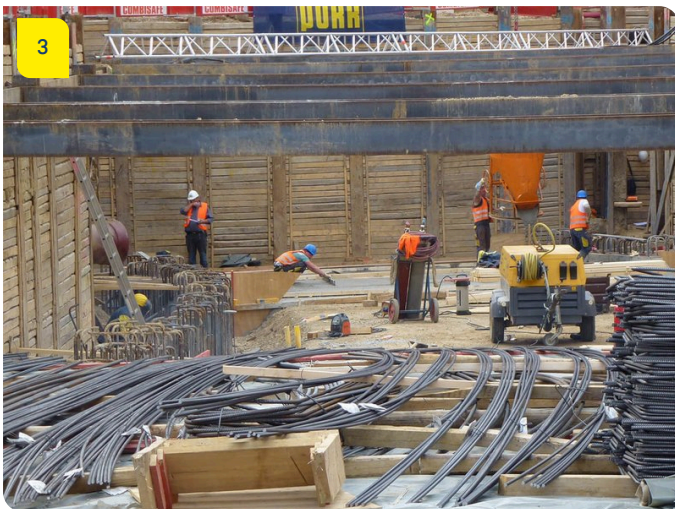
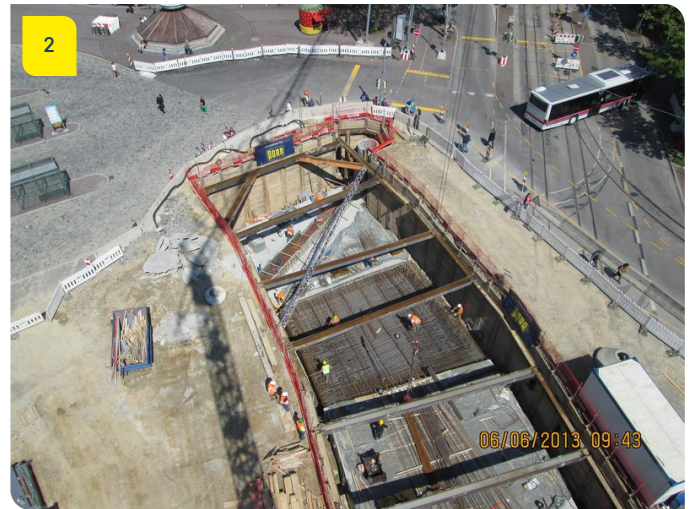


Image notes

1

Large construction site in the centre of town

The cut-and-cover construction was realised by PORR in the eastern construction area

3

With know-how and precision

In the eastern construction area, logistics were of utmost importance for all work

2

Deep down

Numerous works for the eastern construction area were carried out far below street level

Do you have questions about the project or would you like to learn more? Feel free to contact us for further information.

PORR AG Group Communications
Absberggasse 47
1100 Wien
T +43 50 626-0

E-Mail: comms@porr-group.com