



LNG-Terminal, Stade

Data and facts

Company	PORR Spezialtiefbau GmbH
Type	Foundations
Runtime	02.2024 - 08.2024
Principal	FCC Industrial Deutschland GmbH, Stade

[Project report online](#)

www.porr-group.com



Europe's largest LNG tanks: foundation work completed by PORR special civil engineering

Watch our project video* :

- [PORR Germany . LNG-Terminal, Frankipile NG®](#)
-

The Frankipile NG®, also known as the 'green pile', offers further benefits. Due to the inner pipe pile, only low noise emissions occur during production. In addition, the CO₂ footprint during production is significantly reduced. No drillings accumulate during the manufacturing process due to soil displacement, which makes additional transport and external utilisation unnecessary. Furthermore, the use of slender displacement piles saves a considerable amount of concrete compared to alternative pile systems. This leads to a conservation of resources. In order to prove the required high load transfer, five test piles were manufactured and tested in advance.

In addition to the reduction in CO₂ emissions, environmental protection was the top priority. The wash water from the cement mixers was collected in a special sedimentation tank and treated. Noise and vibration levels were measured in advance to protect the wildlife in the Elbe. Last but not least, the work area was watered during dry periods to prevent dust.

* (Videoplattform Vimeo)

Impressions

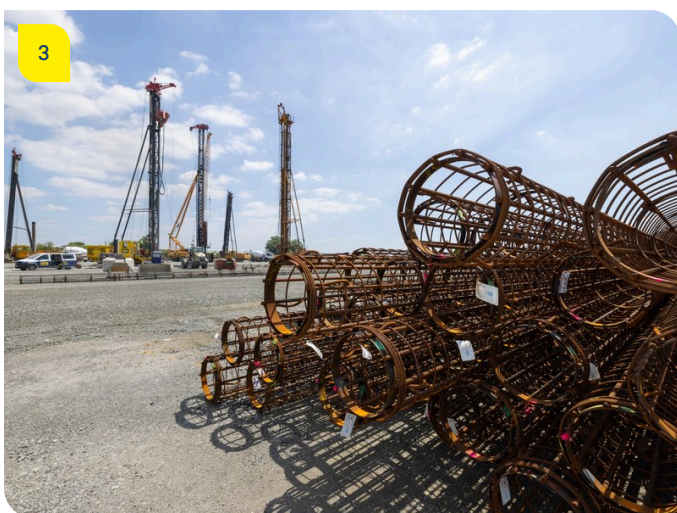
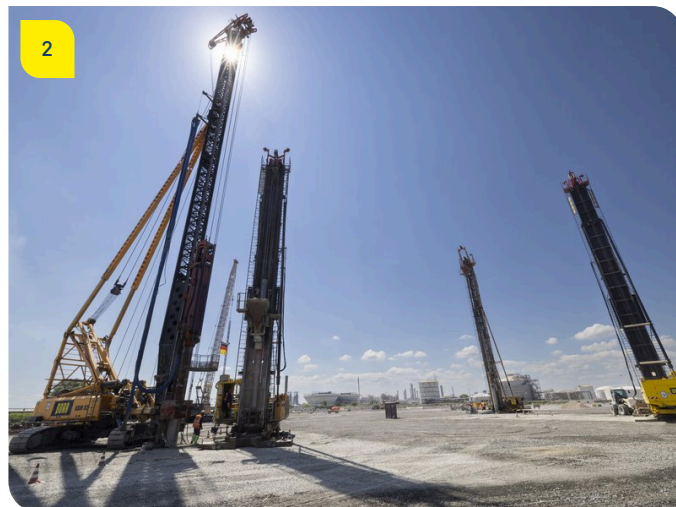


Image notes

1

LNG-Terminal, Stade

The exposed pile heads are subsequently capped and the connecting reinforcement is exposed.

2

LNG-Terminal, Stade

Bei der Pfahlherstellung wird kein Boden gefördert.

3

LNG-Terminal, Stade

5 large specialised devices in use.

Do you have questions about the project or would you like to learn more? Feel free to contact us for further information.

PORR AG Group Communications

Absberggasse 47

1100 Wien

T +43 50 626-0

E-Mail: comms@porr-group.com