



Großlappen sewage treatment plant, Munich

Data and facts

Company	PORR Spezialtiefbau GmbH
Type	Turnkey construction pits
Runtime	05.2024 - 11.2024
Principal	PORR GmbH & Co. KG, Bauherr: Münchner Stadtentwässerung (MSE)

[Project report online](#)

www.porr-group.com



Construction of a new underground installation duct in Munich

High groundwater requires a watertight construction pit

To create the up to 9-metre-deep construction pit, PORR's special civil engineering team constructed around 200 metres of intersecting bored pile walls. As the groundwater is 1 to 2 metres above the bottom of the construction pit, the shoring was made watertight. A total of around 3,300 metres of drilling was carried out. The piles, with diameters of up to 880 millimetres, were up to 13.5 metres long. As the deeper bored piles partially encountered a water-bearing sand layer, particular care had to be taken. Drilling was only possible under water load to prevent the drill pipe sole from breaking open.

In some areas, the shoring was temporarily secured with 4-strand anchors and braced with I-beams and pipe stiffeners. Additional specialised civil engineering works were required in the areas connecting to the existing buildings. In addition to jet grouting underpinnings and sealing columns, pipe injection columns were installed locally to seal various connections in the area of subsidence-sensitive underground installations.

Wolfgang Wiesnet, Regional Manager for PORR Special Civil Engineering, on the challenges of the project: 'Due to subsequent construction sites and the fixed commissioning date, the schedule had to be meticulously adhered to. The fact that we succeeded in doing so despite various logistical stumbling blocks during the European Football Championship and the requirements for environmental protection and occupational safety is a testament to the high level of commitment and expertise of the entire team.'

Impressions

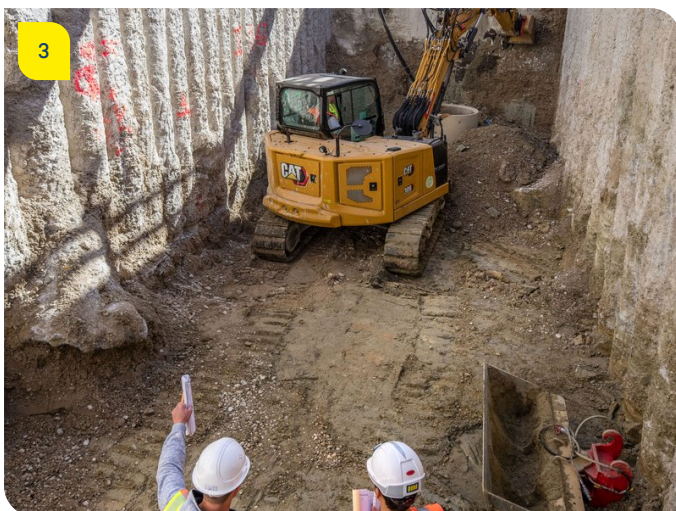


Image notes

1

Klärwerk Großlappen, München

The bored piles, with diameters of up to 880 millimetres, will be up to 13.5 metres long.

2

Klärwerk Großlappen, München

Seals and underpinnings are created using the jet grouting method.

3

Klärwerk Großlappen, München

The underground installation ducts remain accessible later.

Do you have questions about the project or would you like to learn more? Feel free to contact us for further information.

PORR AG Group Communications

Absberggasse 47

1100 Wien

T +43 50 626-0

E-Mail: comms@porr-group.com