



InterContinental Warszawa

Data and facts

Company	PORR Projekt und Hochbau AG
Type	High-rise construction, Hotels
Runtime	04.2001 - 11.2003
Principal	Sienna Hotel Sp.z o.o.

[Project report online](#)

www.porr-group.com



New landmark for Warsaw

The building features five different car park levels, followed by the plinth storeys which house all “front-of-house” areas. On top of that rises the tower area which first starts in a trapezoidal cross-section which expands to an almost squared cross-section on the 21st floor. The tower area houses the guest rooms as well as the larger “long-stay” apartments.

Particularly impressive on the plinth storeys is the atrium which extends across five storeys and, through a glass roof, provides an impressive bottom view of the 21st storey located some 75m above. When it comes to the design of the bars, restaurants, the ball room and the conference room situated in these areas, no expenses were spared regarding architectural and creative ideas as well as elaborate and rare materials. The gym area and the pool on the 44th floor are just as impressive, the latter – visibility provided – offers unforgettable views of Warsaw during the day and at night.

Impressions

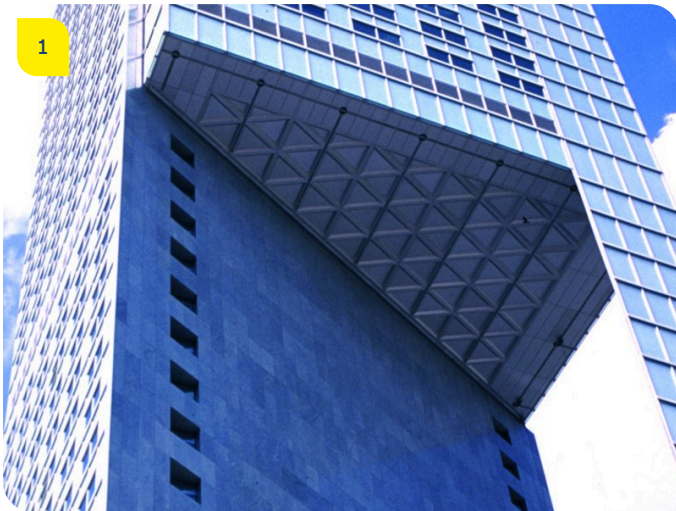


Image notes

1

Hotel InterContinental Warsaw

Hotel InterContinental Warszawa

Do you have questions about the project or would you like to learn more? Feel free to contact us for further information.

PORR AG Group Communications

Absberggasse 47

1100 Wien

T +43 50 626-0

E-Mail: comms@porr-group.com