

# High-speed railway line Erfurt–Leipzig/Halle (VDE 8.2)

## Data and facts

Company	PORR Bau GmbH, Railway Construction Department, in a consortium
Type	Railway construction, Slab Track Austria
Runtime	09.2011 - 12.2015
Principal	DB Netz AG (DB Energie GmbH)

[Project report online](#)

[www.porr-group.com](http://www.porr-group.com)

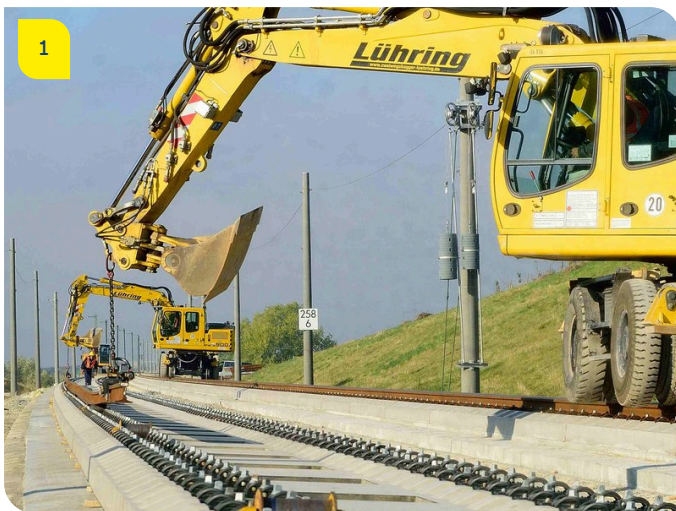




# A milestone in the framework of German Unity Transport Projects.

- 179.352km of slab tracks (17 % in tunnels, 16 % on bridges)
- 3 tunnels (a total of 15.4km of slab tracks): Finne tunnel: 6,970m, Bibra tunnel: 6,466m, Osterberg tunnel: 2,082m
- 6 bridges: Scherkonde bridge: 577m, Gänsebach bridge: 1,012m, Saubach bridge: 248m, Unstrut bridge: 2,668m, Stöbnitz bridge: 297m, Saale-Elster bridge: 6,465m
- Halle/Salle turnoff: 2,112m
- 22km of noise and wind protection walls including foundations
- 60km of overhead line mast foundations
- 42 switches in slab tracks

## Impressions



## Image notes

1

High-speed railway line Erfurt–Leipzig/Halle (VDE 8.2).

For this project, PORR installed a total of 180km of slab tracks.

2

High-speed railway line Erfurt–Leipzig/Halle (VDE 8.2).

VDE 8.2 cut travelling time between Erfurt and Halle by 45 minutes.

3

High-speed railway line Erfurt–Leipzig/Halle (VDE 8.2).

Three tunnels with a total length of 15.4km were equipped with slab tracks.

4

High-speed railway line Erfurt–Leipzig/Halle (VDE 8.2).

A high-speed connection between Berlin and Nuremberg is built in the framework of the German Unity Transport Project VDE 8.

Do you have questions about the project or would you like to learn more? Feel free to contact us for further information.

**PORR AG Group Communications**

Absberggasse 47

1100 Wien

T +43 50 626-0

E-Mail: [comms@porr-group.com](mailto:comms@porr-group.com)