



Harpe bru

Data and facts

Company	PNC Norge Infrastructure and JV Partner Implenla GmbH
Type	Bridge construction
Runtime	03.2014 - 12.2016
Principal	AF Gruppen Norge AS for Statens Vegvesen

[Project report online](#)

www.porr-group.com



First of its kind in Scandinavia

This is a combination of sloping cable bridge and prestressed beam bridge, but with a lower tower height and a softer angle on the towers. The bridge was built as free cantilever from each tower axis, while the side span was built on scaffolding. The bridge with four lanes is part of the E6 and 324m long.

Impressions

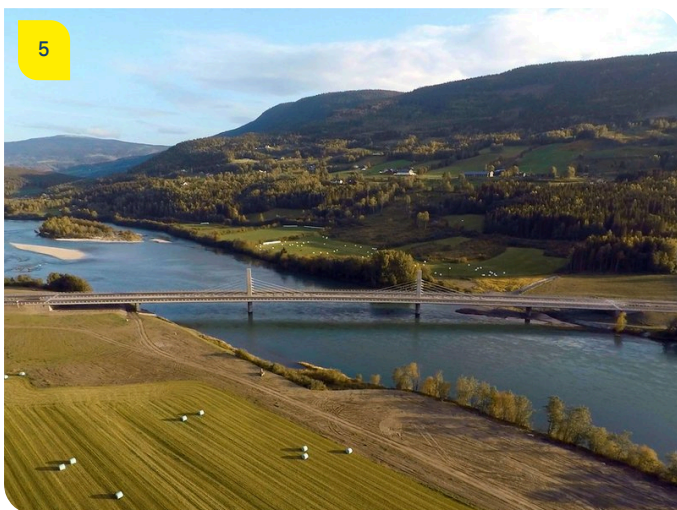
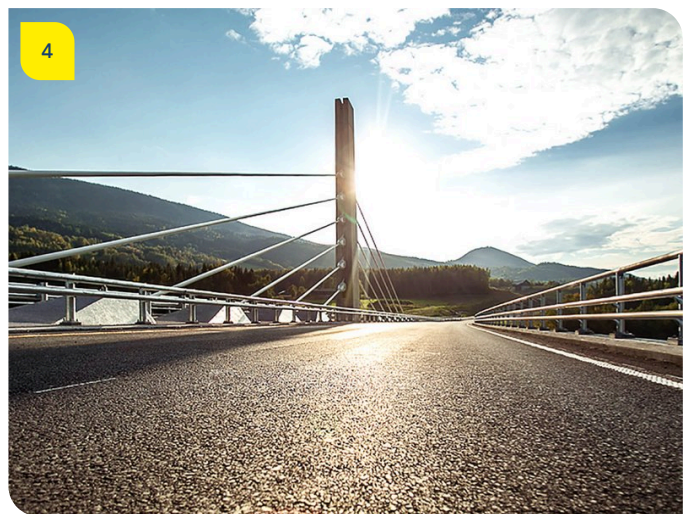
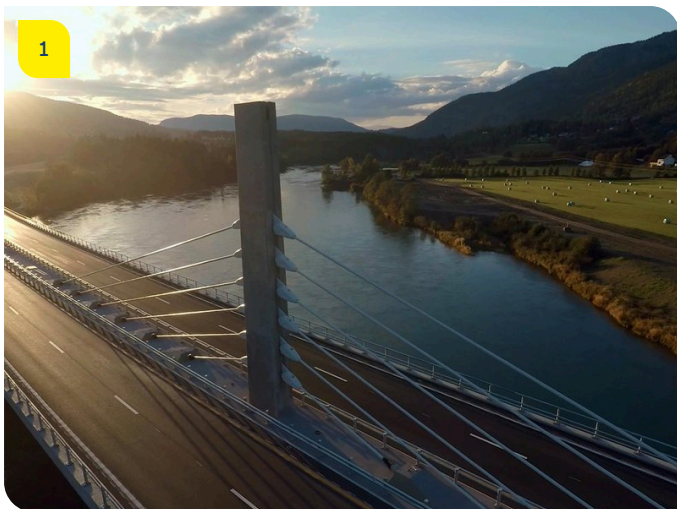


Image notes

1

Elegant practicability.

2

Successful balancing act.

Harpe bridge is Scandinavia's first hybrid, or extradosed, bridge.

For the superstructure, a balanced cantilevered solution was developed.

3 Trout spawning grounds unspoiled.

The largest section of the bridge is around 100m and is placed over the middle of the river between the two pylons.

5 Hybrid theory.

The extradosed cable-stayed bridge design combines a cable-stayed bridge's load-bearing behaviour with that of a girder bridge.

4 Upgrade for the E6.

Four lanes with a length of 324m each keeping the traffic flowing over the Gudbrandsdalen Lågen River.

Do you have questions about the project or would you like to learn more? Feel free to contact us for further information.

PORR AG Group Communications

Absberggasse 47

1100 Wien

T +43 50 626-0

E-Mail: comms@porr-group.com