



# Slab track on the bridge over the River Arges

## Data and facts

Company	PORR Construct
---------	----------------

Type	Slab Track Austria, Railway construction, Track construction
------	--

Runtime	11.2023 - 04.2024
---------	-------------------

Principal	Compania Națională de Căi Ferate CFR S.A
-----------	--

[Project report online](#)

[www.porr-group.com](http://www.porr-group.com)





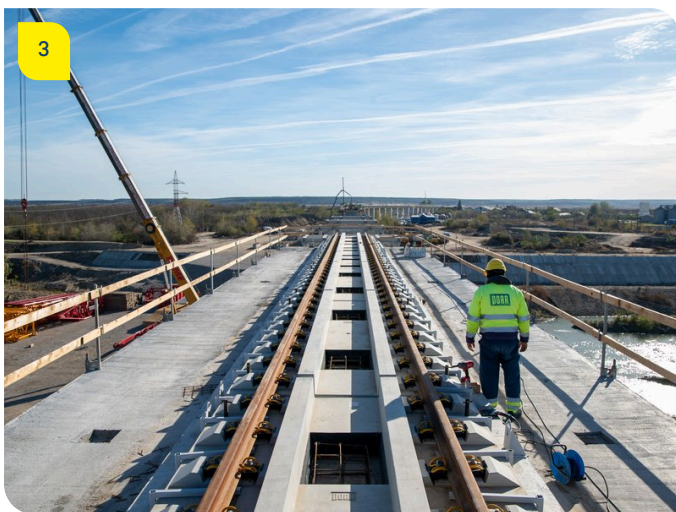
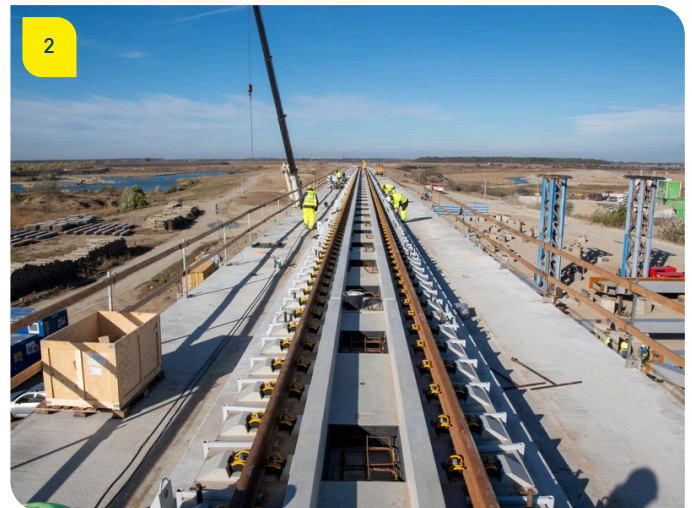
# Romanian railway modernisation project with Slab Track Austria

**Additional added value.** In slab track systems, derailment protection is integrated into the track slabs. This eliminates the need to use expensive steel guide rails on the bridge. The safety of future operations can be increased cost-effectively.

In addition, the prefabricated track support slabs of the slab track system are used as a foundation for rail expansion joints. The prefabricated system allows for easy on-site installation while maintaining high quality and accuracy for the support of the steel components.

The CFR railway authority has already granted system approval for the use of PORR's Slab Track Austria technology in Romania.

## Impressions



## Image notes

1

PORR slab track premiers in Romania.

2

First construction phase of Slab Track Austria in Romania.

Aerial view of the new railway bridge under construction over the Arges River in Romania, on which the PORR slab track system will be installed.

3

PORR brings proven slab track technology to Romania.

In future, trains on the new single-track railway bridge will cross the Arges River on the flexible track support slabs from Slab Track Austria.

Installation of the slab track system developed, constructed and produced by PORR.

Do you have questions about the project or would you like to learn more? Feel free to contact us for further information.

**PORR AG Group Communications**

Absberggasse 47

1100 Wien

T +43 50 626-0

E-Mail: [comms@porr-group.com](mailto:comms@porr-group.com)