



DOCK V1

Data and facts

Company

Type	Office buildings
------	------------------

Runtime	05.2012 - 04.2014
---------	-------------------

Principal	Crestyl, UBM Bohemia
-----------	----------------------

[Project report online](#)

www.porr-group.com



Comfort and distinction.

The architectural hallmark of the DOCK V1 building is its elaborate projecting façade, constructed in a combination of transparent and opaque sections and ribbon glazing.

The site's outdoor areas feature a combination of paved and green spaces, creating a pleasant, comfortable ambience outside the DOCK V1 building as well as inside it.

Impressions

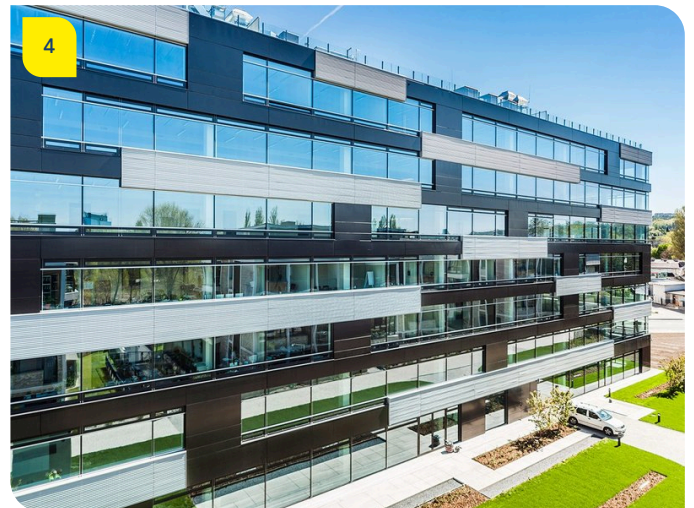
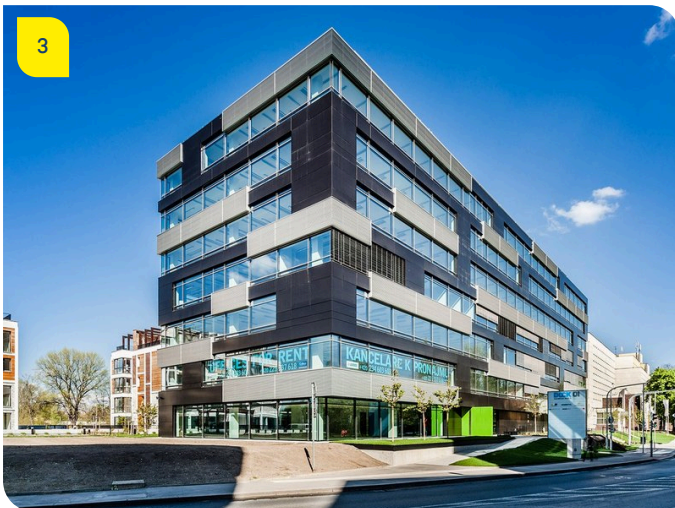


Image notes

1

DOCK V1 - the workplace of the future.

The building comprises eight upper and two basement floors.

2

The façade is the architectural hallmark of the DOCK V1 building.

The building received LEED Gold certification in recognition of its fitting with the newest technology.

3

A distinctive look.

The superstructure of the DOCK V1 building was constructed as a monolithic reinforced concrete framework.

4

Awarded LEED Gold.

The set-back eighth floor contains a terrace offering a fantastic view of Prague.

Do you have questions about the project or would you like to learn more? Feel free to contact us for further information.

PORR AG Group Communications

Absberggasse 47

1100 Wien

T +43 50 626-0

E-Mail: comms@porr-group.com