



# Cosmos Bern

## Data and facts

Company	PORR Equipment Services Deutschland GmbH
---------	--

Type	Residential construction
------	--------------------------

Runtime	04.2015 - 02.2017
---------	-------------------

Principal	Halter AG
-----------	-----------

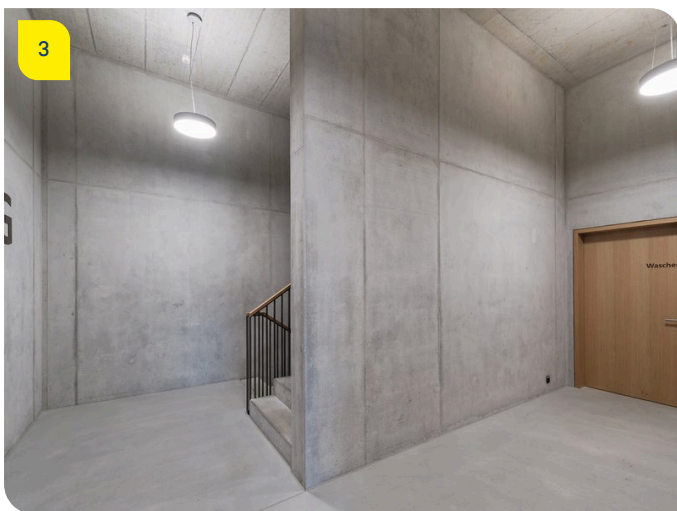
[Project report online](#)

[www.porr-group.com](http://www.porr-group.com)



# Urban planning accent at a suburban railway station.

## Impressions



## Image notes

1

Modern residential high-rise in the best location.

Outstanding connection with your “very own” railway link.

3

Modern and stylish.

Exposed concrete in stairwells lends an air of sleek elegance.

2

Sustainable living.

Minergie standards represent comfort, efficiency and sustainability.

Do you have questions about the project or would you like to learn more? Feel free to contact us for further information.

**PORR AG Group Communications**

Absberggasse 47

1100 Wien

T +43 50 626-0

E-Mail: [comms@porr-group.com](mailto:comms@porr-group.com)