



Continental Iași

Data and facts

Company

Type Office buildings

Runtime 01.2019 - 06.2020

Principal Continental Automotive SRL

[Project report online](#)

www.porr-group.com



Expansion of the Continental Research Centre.

Thanks to a simplified system with prefabricated columns and beams, we managed to connect the elements optimally while reducing the execution time. The connections between the transverse and longitudinal beams were made at the individual columns. Once the prefabricated columns were erected, we were able to inject the mechanical joints with a high-flow mortar.

The individual beams used are also prefabricated elements. Similarly to that, the slabs consist of pre-stressed strips with holes already positioned on the beams, over which we only had to pour the cast-in-place concrete. The mechanical, electronic and sanitary installations and equipment installed throughout the building were updated to the latest state-of-the-art technology. Particular attention was paid to selecting the dimensions in such a way that they could accommodate the various functionalities of the buildings and the entire building complex. After almost one and a half years, we were not only able to successfully complete a challenging assignment, but we are convinced that we were able to set new standards with this project.

Impressions

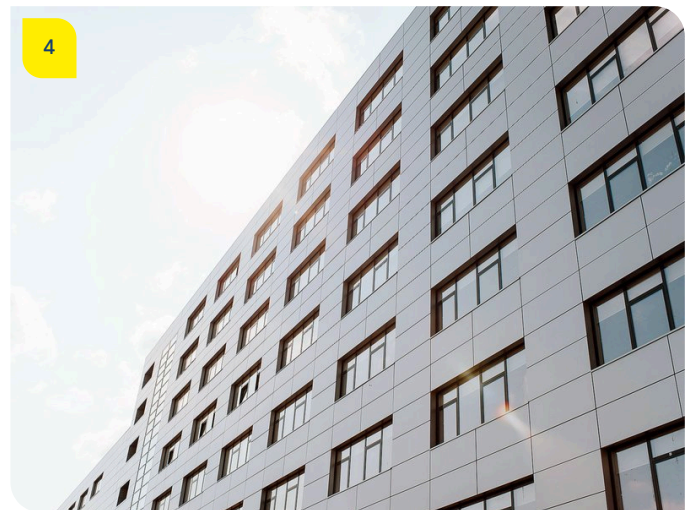
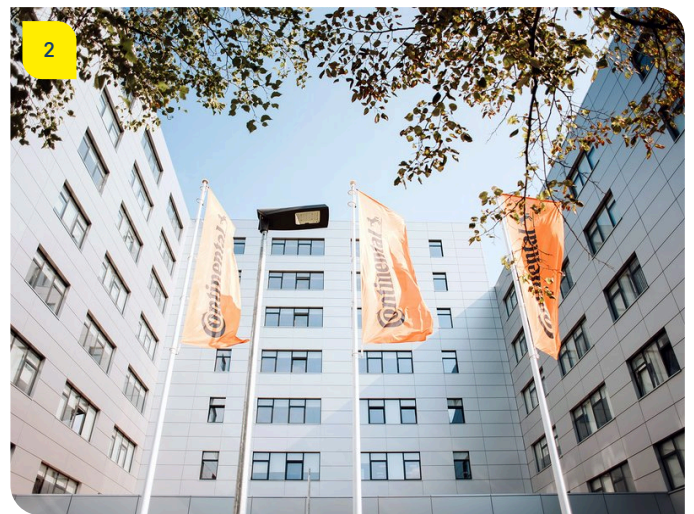


Image notes

1

New standards.

The prefabricated concrete construction used for the seven-floor new building is still hardly used in Romania.

2

Extensive extension.

The extension on the south, east and west sides of the existing building and in the inner courtyards covers more than 25,000 m² of floor space.

3

Common base.

Since June 2020, the new research centre has provided space for Continental employees who were previously active at various office locations in the city.

4

Trendsetting building.

By using the prefabricated concrete construction method, the elements could be optimally connected with each other and at the same time the speed of execution could be increased.

Do you have questions about the project or would you like to learn more? Feel free to contact us for further information.

PORR AG Group Communications

Absberggasse 47

1100 Wien

T +43 50 626-0

E-Mail: comms@porr-group.com