



Classic 7

Data and facts

Company

Type	Office buildings
------	------------------

Runtime	12.2006 - 09.2008
---------	-------------------

Principal	Nofim Czech Republic s.r.o.
-----------	-----------------------------

[Project report online](#)

www.porr-group.com



Connecting old with new.

The conversion works on the site and building began in December 2006. The project was completed in September 2008, with operations starting right away. A gross floor area of around 30,000m² and more than 200 parking spaces were constructed in the course of the project.

The complex offers resident companies modern, flexible offices in a historic ambience. Staff members have access to a restaurant as well as a recreation area containing green spaces with comfortable bench seating and fountains.

Impressions

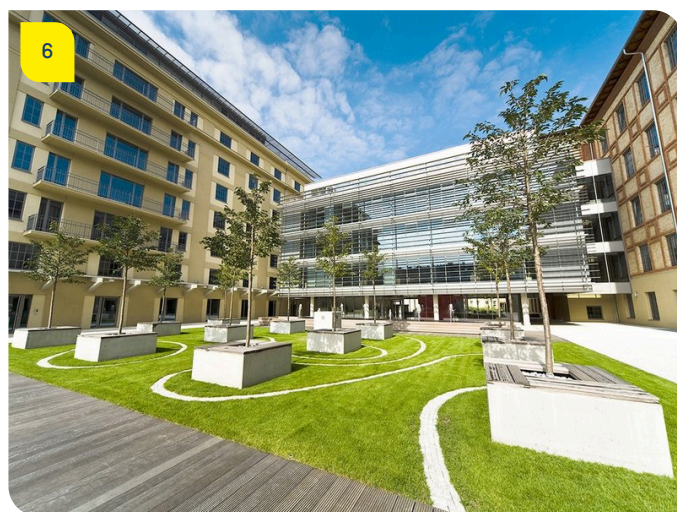
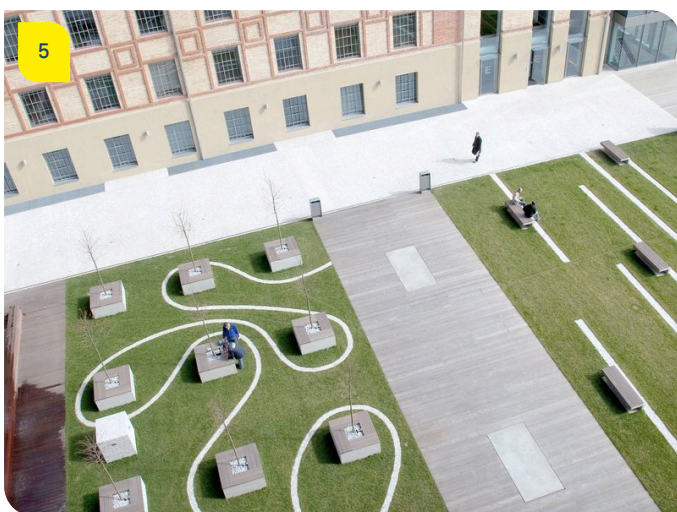
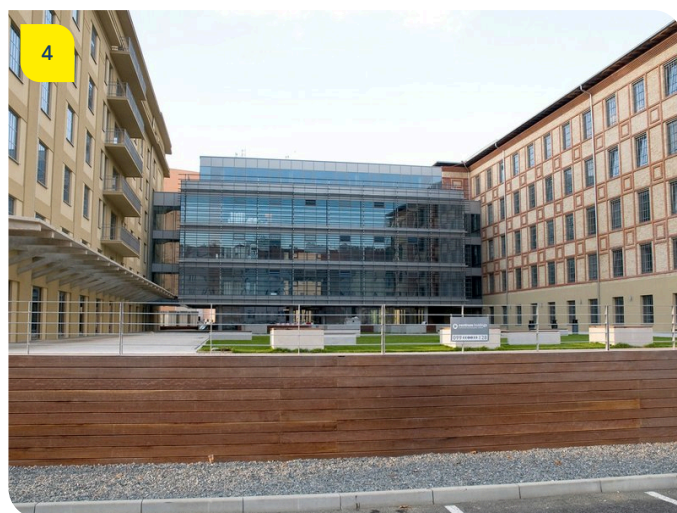
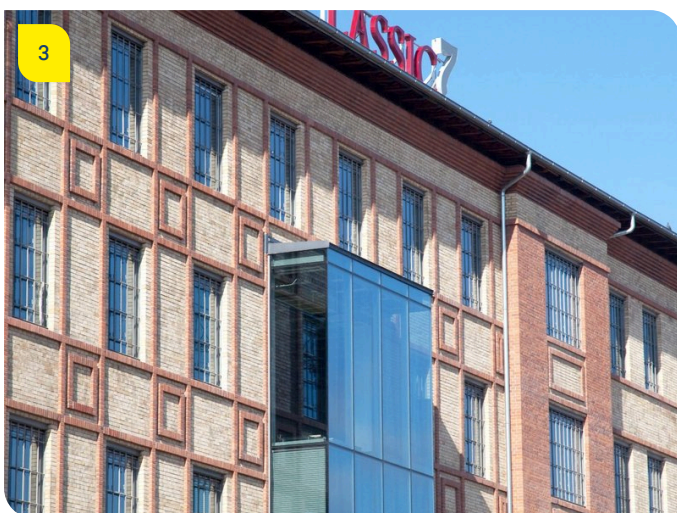
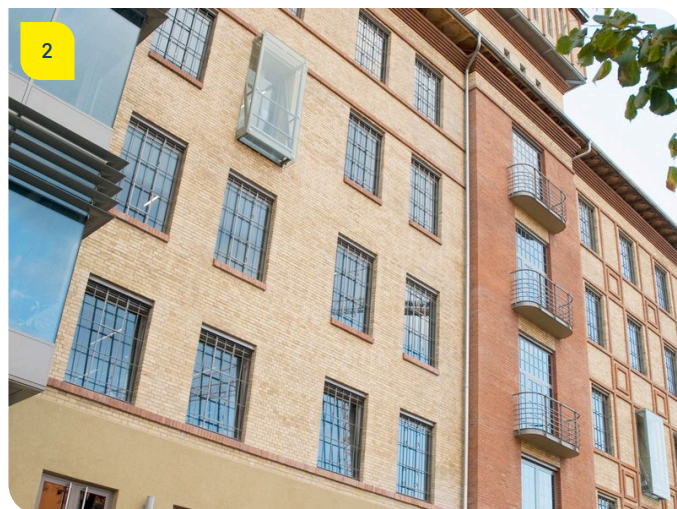
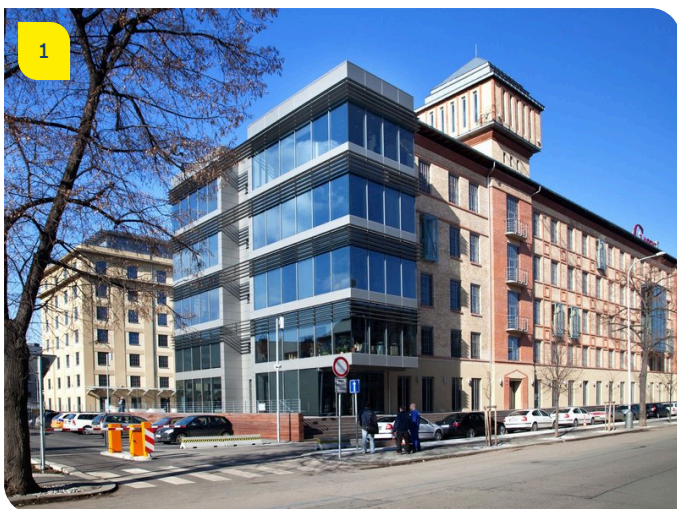


Image notes

1

Past meets present.

2

Classic industrial architecture - modernised.

The amalgamation of old and new gave rise to exclusive offices.

The project preserved the unique industrial character of the area while lending it a modern touch.

3

Old and new.

The renovated façade of the heritage-listed building shines with new splendour.

4

A successful combination.

The modern section creates a unique connection between the historic buildings.

5

Industrial architecture meets modern design.

A skilful architectural connection between past and present.

6

Relaxing in the park.

The green spaces invite staff members to relax.

Do you have questions about the project or would you like to learn more? Feel free to contact us for further information.

PORR AG Group Communications

Absberggasse 47

1100 Wien

T +43 50 626-0

E-Mail: comms@porr-group.com