



# CARRÉ Muthgasse

## Data and facts

---

**Company** ALU-SOMMER GmbH

---

**Type** Facade construction

---

**Runtime** 02.2024 - 04.2025

---

[Project report online](#)

[www.porr-group.com](http://www.porr-group.com)

**PORR**

# Sophisticated façade construction for modern office space

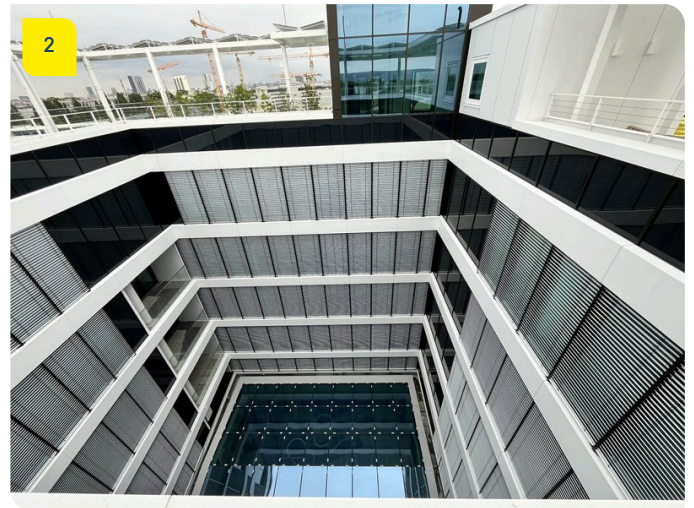
Between February 2024 and April 2025, ALU-SOMMER carried out the planning, fabrication and installation of the metalwork for the office building at Muthgasse 105 in Vienna on behalf of PORR Bau GmbH. At the heart of the project is a steel mullion-transom façade spanning approximately 6,000 m<sup>2</sup> with around 400 aluminium insert elements. In addition, 200 m<sup>2</sup> of lift-and-slide doors were installed, which emphasise the building's modern character and create an open connection to the outdoor areas.

The office spaces are characterised by a high degree of flexibility, generous natural light and spacious outdoor areas. Thanks to its immediate proximity to Heiligenstadt station, with connections to the underground and suburban rail networks, the building is optimally connected to the public transport network.

Particular requirements arose from the extensive fire safety regulations up to the highest class, EI90. This necessitated site-specific tests of the façade construction regarding fire spread in accordance with OIB Guideline 2. In addition, several special technical solutions were developed, including specific joint sealing solutions in connection with the drainage concept, as well as wind-resistant external venetian blind fixings using steel blades.

As part of the project, ALU-SOMMER also designed and installed 4,400 m<sup>2</sup> of sun protection external blinds as well as 3,000 m<sup>2</sup> of sheet metal and pilaster cladding. The all-glass corner designs without visible corner posts represent an architectural highlight. The concept is complemented by 600 m<sup>2</sup> of all-glass balustrades and bullet-resistant glazing in the security and control centre area.

## Impressions



## Image notes

1

CARRÉ Muthgasse office development in Vienna

At the heart of the project is a steel mullion-and-transom façade measuring around 6,000 m<sup>2</sup>, featuring some 400 aluminium infill panels.

2

Modern architecture

The office spaces are characterised by a high degree of flexibility, ample natural light and spacious outdoor areas.

Do you have questions about the project or would you like to learn more? Feel free to contact us for further information.

**PORR AG Group Communications**

Absberggasse 47

1100 Wien

T +43 50 626-0

E-Mail: [comms@porr-group.com](mailto:comms@porr-group.com)