



BMW München Freimann

Data and facts

Company	pde Integrale Planung GmbH; PORR Bau GmbH (Abt. Großprojekte Hochbau), PORR GmbH & Co. KGaA
Type	Building preparation, Architecture, Fire protection, Building certification, LEAN Management, Technical building services planning, Structural design
Runtime	06.2017 - 02.2019
Principal	Bayerische Motoren Werke Aktiengesellschaft (BMW AG)

[Project report online](#)

Best performance in partnership of all project participants

pde Integrale Planung GmbH also relies entirely on LEAN Management to optimize and streamline processes and to implement the desired cost savings. The joint project was realized using a partnering model. This enabled the client, the responsible PORR employees and the executing companies of the most important trades to work closely together from planning to turnkey implementation. Specific knowledge, experience and know-how of all participants could be optimally brought in. Detailed phase plans and efficient cycle planning using the VILLEGIO Last Planner® system made it possible to submit approval planning in such a short time.

The client's representative Peter Röllgen (BMW) has been using LEAN as a standard for years. He was nevertheless positively surprised by pde Integrale Planung GmbH's approach: "Even though LEAN was one of our specifications, we are enthusiastic about the implementation by pde Integrale Planung GmbH and feel confirmed that we made the right choice for our new office building.

Keyword "Future Office": Right from the start, pde Integrale Planung GmbH focused on environmentally friendly planning - especially in the choice of materials, water and energy supply. The integration of sustainability aspects such as user comfort, material ecology or regionality comprehensively corresponds to the reference system "Sustainable Building" defined by the BMW Group.

In addition to the general planning, the design studio of pde Integrale Planung GmbH was commissioned to visualise the interior design. This offered an optimal additional service for the customer and rounded off the planning in its entire bandwidth.

Impressions

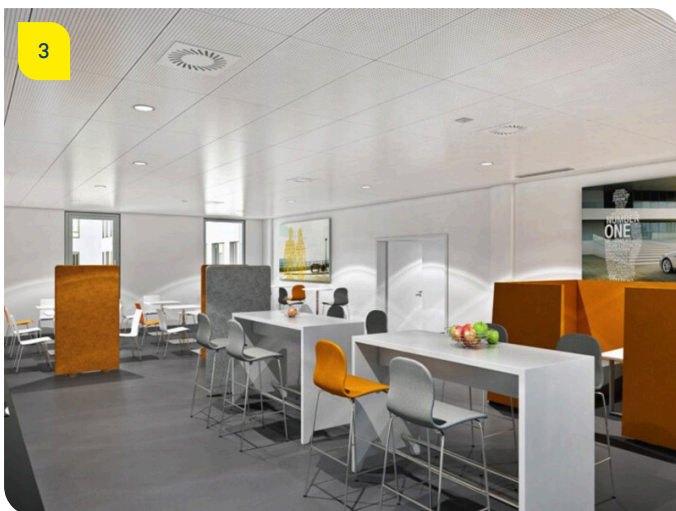
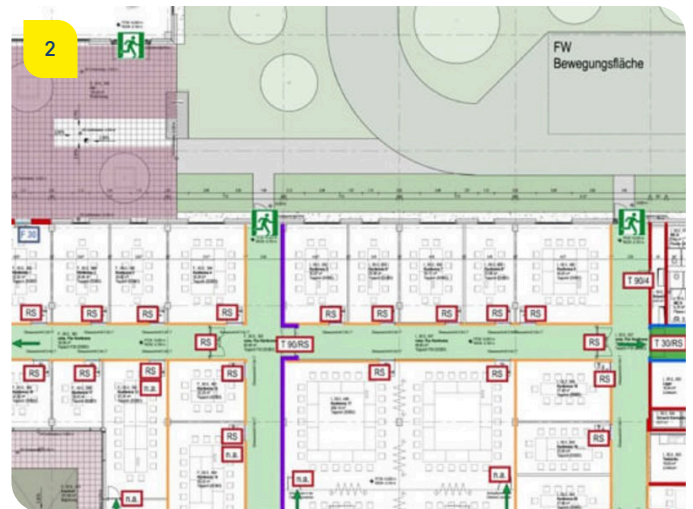


Image notes

1

Modern office building in the "Freimann" district in Munich.

Sustainable building is a central issue for BMW.

2

Sophisticated fire protection planning for the new office building.

The fire protection experts from pde Integrale Planung GmbH also made their contribution to the general planning.

3

Modern and functional interior design visualized by pde Integrale Planung GmbH..

According to the motto "Future Office" the design studio of pde Integrale Planung GmbH designed the interior of the car.

Do you have questions about the project or would you like to learn more? Feel free to contact us for further information.

PORR AG Group Communications

Absberggasse 47

1100 Wien

T +43 50 626-0

E-Mail: comms@porr-group.com