



Berlin

BBI Infotower

Data and facts

Company	PORR GmbH & Co. KGaA
Type	Commercial building
Runtime	03.2007 - 11.2007
Principal	Flughafen Berlin Schönefeld GmbH

[Project report online](#)

www.porr-group.com



Complex technology for extraordinary architecture.

The tower consists of a round access core built using reinforced concrete as well as an interior lift and a steel staircase that runs around the core. The building is enclosed by a triangular steel structure which twists by 6° on every one of the tower's ten levels. This steel construction is covered with a transparent membrane foil which can be used for multimedia purposes. Located on the 9th level is a 60-m² enclosed lookout platform and another 60-m² lookout platform, this one open, is located on the 10th level. The adjacent visitor pavilion rests on a reinforced concrete base and has been – similar to the tower itself – built as a steel structure with circumferential membrane foil. In its interior, it houses an exhibition space, a marketing office, a bistro as well as sanitary facilities.

Elaborately landscaped outside facilities complete the building ensemble's modern appearance. The building's stipulated construction time was an unbelievable short 16 weeks.

Impressions

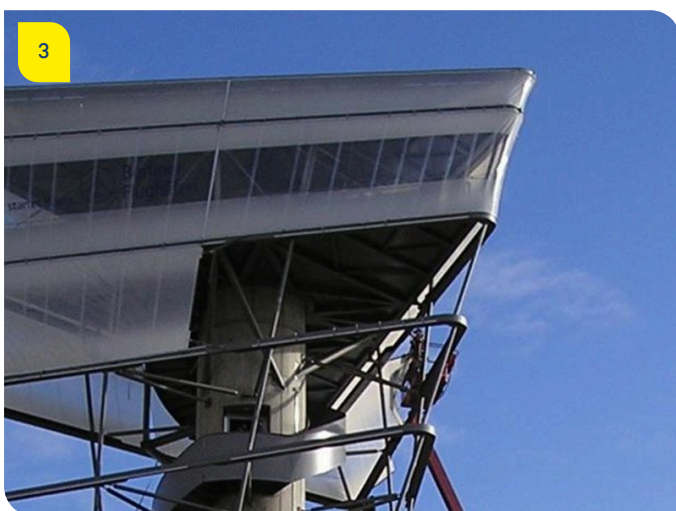
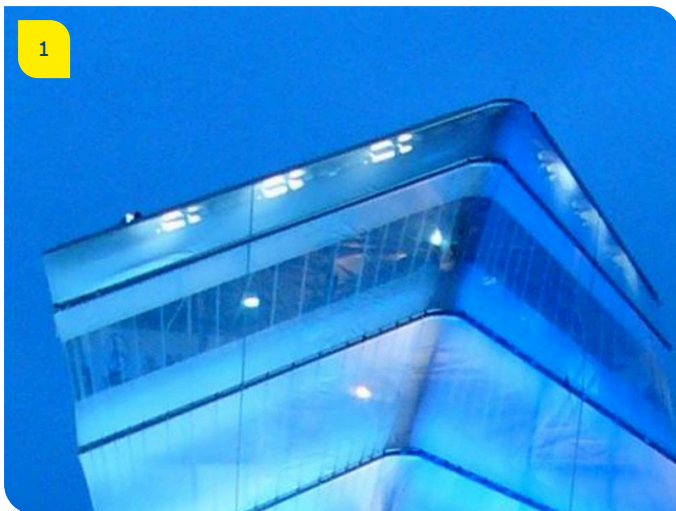


Image notes

1

BBI Infotower airport, Berlin

A landmark – day and night

2

BBI Infotower airport, Berlin

3

BBI Infotower airport, Berlin

The steel structure's membrane cover is created.

The steel staircase runs around the tower's concrete core.

Do you have questions about the project or would you like to learn more? Feel free to contact us for further information.

PORR AG Group Communications

Absberggasse 47

1100 Wien

T +43 50 626-0

E-Mail: comms@porr-group.com