



Ashta hydropower station

Data and facts

Company	PORR Bau GmbH
Type	Large-scale projects, Power plant construction and plant engineering
Runtime	01.2010 - 12.2012
Principal	ENERGJI ASHTA Shpk

[Project report online](#)

www.porr-group.com



Technically challenging solution for Albanian hydropower station

The construction pit between the diaphragm wall was excavated like a large bathtub using backhoe excavators. Subsequently, a 1.5 m thick underwater concrete floor was laid by professional divers 10 m below the surface. To prevent the water pressure from lifting it to the top, it needed to be pushed down using GEWI piles.

Only once this had been done, the water could be pumped out of the construction pit without causing technical problems. All these civil engineering measures were necessary before starting the actual concrete work on the power station structure.

Not least thanks to excellent cooperation between owner, planners and construction company, this difficult construction project could be successfully completed in a short time and at high quality.

Impressions

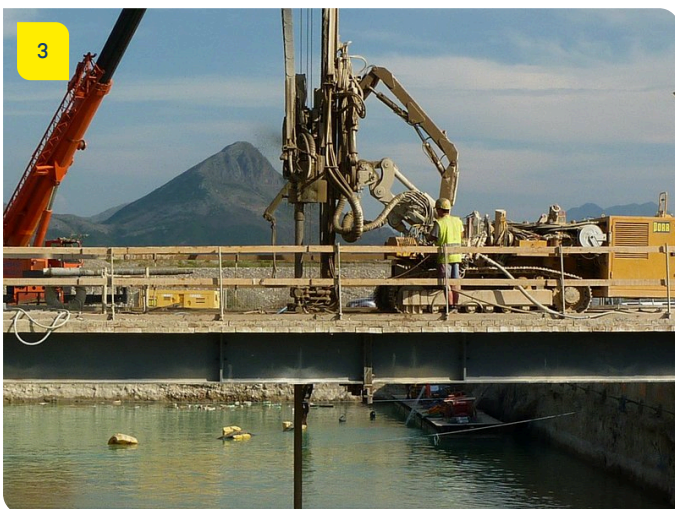


Image notes

1

Ashta hydropower station

2

Ashta hydropower station

Some 100,000 m³ of concrete were installed in the course of this project.

The construction pit was excavated like a large bathtub.

Ashta hydropower station

3

PORR overcame great technical challenges at this construction site.

Do you have questions about the project or would you like to learn more? Feel free to contact us for further information.

PORR AG Group Communications

Absberggasse 47

1100 Wien

T +43 50 626-0

E-Mail: comms@porr-group.com