



# Aqua Burgenland Sopron drinking water pipeline, Neudörfel to Rohrbach section

## Data and facts

Company	PORR in a consortium
Type	Pipeline construction
Runtime	11.2014 - 07.2017
Principal	Wasserleitungsverband Nördliches Burgenland

[Project report online](#)

[www.porr-group.com](http://www.porr-group.com)





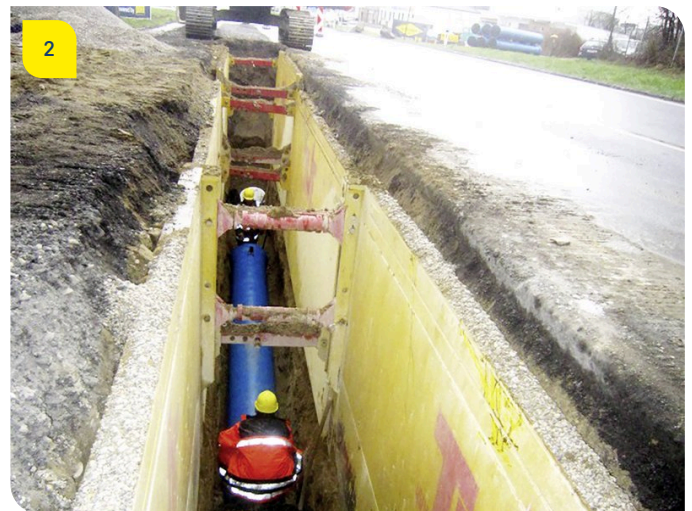
# Making a splash in the border triangle.

## Challenging pipeline construction.

The drinking water pipe was built using an open-cut method. A need for marked high and low points meant that the specified longitudinal section had to be very closely followed: The pipe was laid at depths varying between 2.2m and 6m.

The pipeline route switched between surfaced, high-quality street areas, municipal routes, private tracks and gravel roads, and agricultural areas. Difficulties included maintaining traffic circulation, constricted construction areas, and challenging ground and groundwater situations. As part of the work, the pipeline had to cross two ÖBB railway routes, two motorways and three main roads – without trenching: In the Neudörfl area, for example, a microtunnelling procedure was used. The contract also included all drainage shafts, ventilation shafts and valve chambers along the route.

## Impressions



## Image notes

1

Removing soil layer by layer.

Before the actual construction work began, cautious removal of the topsoil from the pipeline route, one layer at a time, facilitated an archaeological investigation.

2

Pipeline project with depth.

A total of 23,360m of cast iron pipe was laid at depths from 2.2m to 6m in the Neudörfl to Rohrbach section, to be used for the Aqua Burgenland Sopron drinking water pipeline.

Do you have questions about the project or would you like to learn more? Feel free to contact us for further information.

**PORR AG Group Communications**

Absberggasse 47

1100 Wien

T +43 50 626-0

E-Mail: [comms@porr-group.com](mailto:comms@porr-group.com)