



# Albulatunnel II - New Construction

## Data and facts

Company	PORR SUISSE AG in consortium
Type	Tunneling
Runtime	04.2015 - 12.2022
Principal	Räthische Bahn AG (RhB)

[Project report online](#)

[www.porr-group.com](http://www.porr-group.com)



# A new tunnel to the Engadine.

A 110m long section (approximately 1,000m behind the Preda portal) runs through the rauwacke, where complex geological and hydro-geological conditions necessitated the highest degree of structural expertise. Materials management and logistics constituted one of the major challenges in the Albula Tunnel II railway construction project.

Under high mountain conditions - the region is one of the coldest in Switzerland - the following achievements were made:

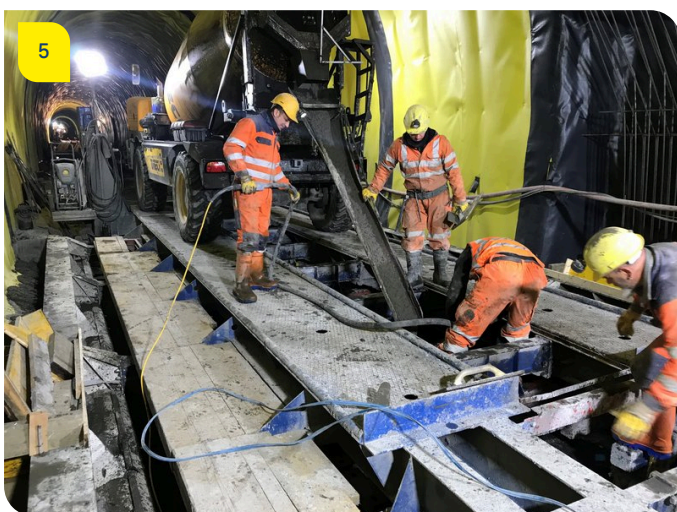
- Excavation of 700,000t of material
- Processing of 400,000t of Albula granite in the gravel plant; of this, 240,000t of aggregates for concrete were produced
- Production and placement of 105,000m<sup>3</sup> concrete
- Installation of 94,000m cable protection conduit (DN 132)
- Installation of 15,000m of sewer pipes (DN200/DN315/DN355)
- Up to 130 workers in operation
- Over 1.0 million working hours

To the SRF report “Breakthrough in the Albula massif”

To the PORR project video “Construction works on the Albula tunnel in November 2018”



# Impressions



## Image notes

1

Between Albula Valley and Engadine.

2

Completed tunnel shell.

In the middle of the Swiss mountains the Albula Tunnel connects the village of Preda with Spinas.

Portal Spinas: smooth transition from the historic Albula tunnel to the new Albula tunnel.

3 With the formwork carriage to the south.

Drainage mats and waterproofing foil were laid between the concreted inner and outer shells.

4 Our tunnels remain waterproof.

Twelve cross passages connect the new tube with the existing Albula Tunnel I. To ensure frost resistance, Tunnel II was protected from ingress of mountain water by an umbrella seal at locations with high water intake.

5 Working deep in the mountain.

The concreting of the bottom and the drainage pipes required to discharge the mountain water took place in a very constricted space.

Do you have questions about the project or would you like to learn more? Feel free to contact us for further information.

**PORR AG Group Communications**

Absberggasse 47

1100 Wien

T +43 50 626-0

E-Mail: [comms@porr-group.com](mailto:comms@porr-group.com)